

# SURAMA

---



SURAMA

# SPECIFICATION.



Asking price  
**EUR 4,950,000 (Tax paid)**



Built  
**1997 (refitted 2017), Royal Huisman Shipyard,  
The Netherlands**



Length  
**40.7m (133.5ft)**



Beam  
**8.8m (28.7ft)**



Draft min/max  
**2.9m (9.4ft)/6.8m (22.3ft)**



Displacement  
**270 tonnes**



Cruising speed  
**11 knots**



Maximum speed  
**12 knots**



Range  
**5,000 nm at 10 knots**



Flag  
**Cayman Islands**



Lying  
**East Mediterranean**



Class  
**Lloyd's Register (LR)**



Exterior designer  
**Fontaine Design Group**



Interior designer  
**Winch Design**



Construction  
**Hull - Aluminium, Superstructure - Aluminium**



Crew  
**6**



Guests  
**8**



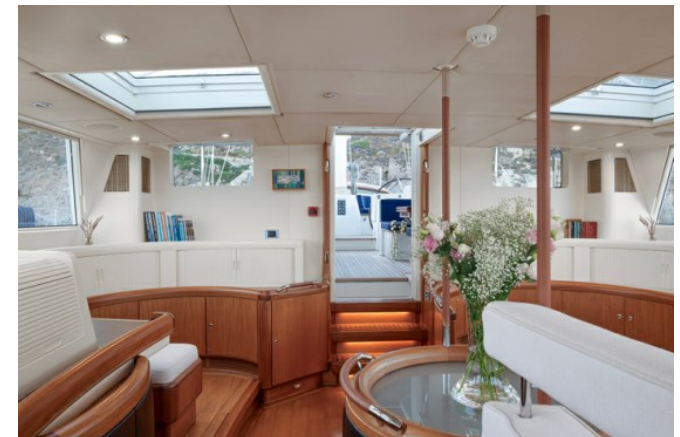
Cabins  
**3 (1 x double, 2 x twin, 2 x additional berths)**



Engines  
**2 x 570hp Mercedes**



Generators  
**2 x Onan**



SURAMA

Main deck lounge



# SURAMA

Main deck lounge



SURAMA

Main deck lounge



SURAMA

Main deck dining area













# SURAMA

Aft deck dining area



SURAMA

Aft deck dining area



SURAMA

Port view



**SURAMA**

Cockpit



SURAMA

Sun deck



**SURAMA**

Sun deck





SURAMA

At anchor



**SURAMA**

Swim platform



**SURAMA**

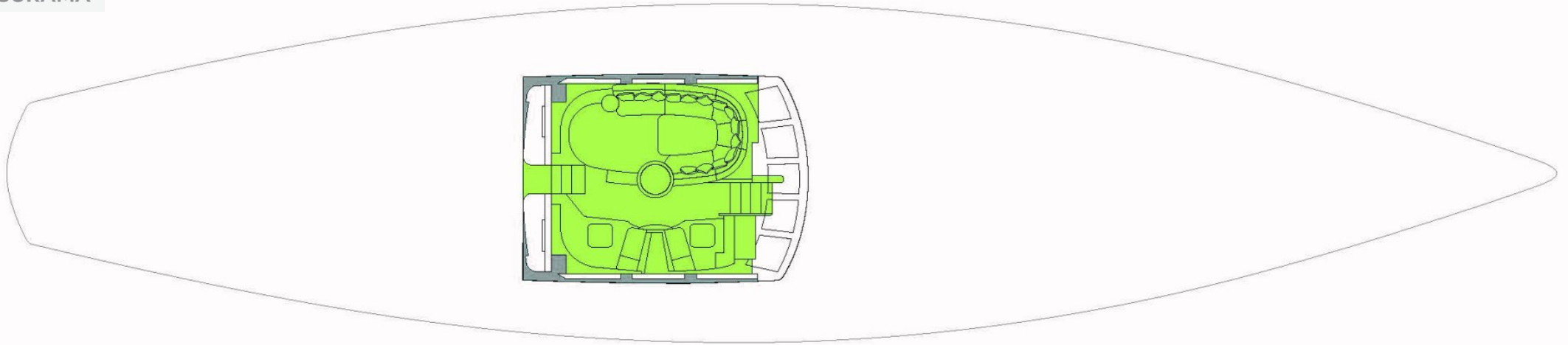
Aerial view



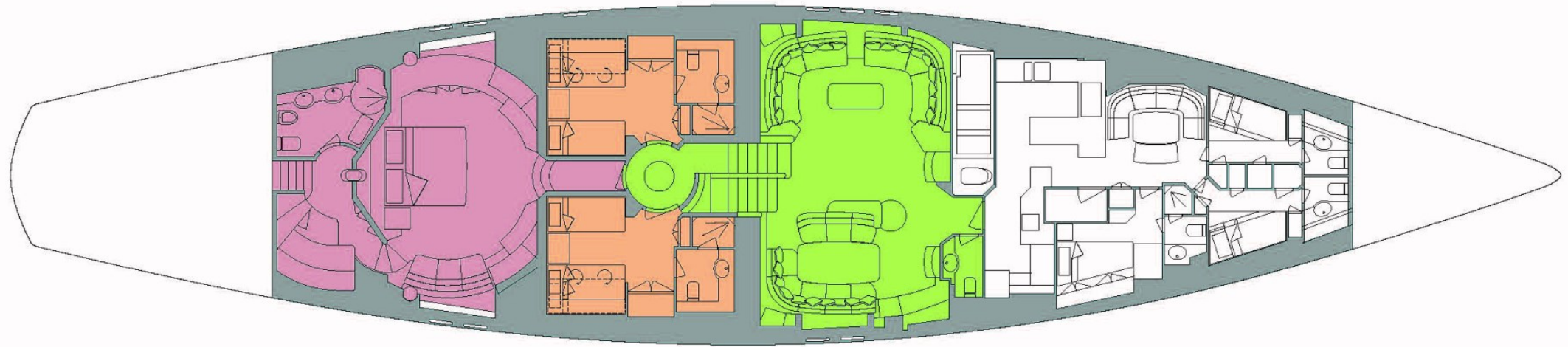
# SURAMA

Aerial view with tender





**UPPER DECK**



**MAIN DECK**

 GUEST AREAS  VIP SUITE  GUEST CABINS

Advertising of these vessel(s) in printed publications, on the internet or in any other medium is not permitted without prior written permission. All particulars are given in good faith and are believed correct but they cannot be guaranteed.

Last updated: 23 September 2025