

(949) 675-2881 office

Surveys &  
Appraisals of  
Yachts & Small Craft



**MARITIME  
CONSULTANT  
INC.**

(714) 530-7122 fax

**File #:** 4285 F      **Official Number:** 597967 (US)      **Gross Tonnage:** 664 ITC; 284 GRT

**Vessel Name:** "Pacific Provider"      **Builder:** Blount Marine, Corp., @ Warren, Rhode Island

**Vessel Length:** 149'      **Year:** 1978 (per document)      **Vessel Type:** Expedition / Yacht Support Motor Vessel

**Owner:** Offshore Outpost Boat, LLC.      **Survey Date:** July 23, 24, 28, 30; August 24, 2020

**Survey Requested By:** Cole Lysaught

**Address:**

**City:**      **State:**      **Zip:**

**Replacement Value:** \$ 20,000,000.00      **Market Value:** \$ 2,100,000.00

**Layout:**

This 149' expedition / yacht support motor vessel was built by Blount Marine, Corp. at Warren, Rhode Island in 1978 of steel originally as an offshore supply vessel, then Bering Sea crab fishing vessel. The exterior of the vessel is fairly clean, most all surfaces are coated with paint while numerous areas display corrosion which need to be attended to. The interior of the vessel in regards to guest accommodations is nice with the crew accommodations showing wear. The crew accommodations were never well done in regards to quality and or design. The layout of the vessel is as follows, there's a chain locker located in the forepeak accessed from the foredeck via water tight hatches. The chain lockers are suffering from corrosion as is the ground tackle and windlass. Next from above is the pilothouse with main helm station, copilot station, radio station, navigation station, and raised settee along with a simple array of older electronics, some of which are inoperable. The area overall is dirty and unorganized. Exiting down steps is the first mates stateroom with single over under bunks, aft is the captains stateroom with double wide bunk. Opposite port is the crew head with stall shower, toilet and vanity sink, of which displays corrosion and grime. Next aft is the main commercial grade gourmet galley fitted with high quality appliances, many of which show heavy use, age along with the fact some are inoperable. Next aft is the main dining room with two large tables, chairs, day head and beverage refers. Continuing aft is a large saloon with leather sofas and chairs along with a granite top commercial grade bar with entertainment center, some of the bar appliances are inoperable. Down steps aft is the main deck with six guest staterooms three starboard three port all fitted with two single bunks which can be pushed together to make one double wide bunk, entertainment center, hanging locker, dresser, climate control and ensuite head. The ensuite heads are fitted with stall shower, vanity sink and toilet. The guest staterooms are clean and show very little if any wear. Continuing forward are the walk in refer and freezer, linen closet and crew mess. The crew mess is well equipped with quality appliances and a large dinette however is due for a complete refit. Forward the crew mess is the engineer stateroom with double wide bottom and single over bunks. Port is another crew stateroom with multiple over under bunks, aft is the



crew head with stall shower, vanity sink and toilet all of which is dirty and worn. Next aft down steps is the dry storage room while aft is another crew stateroom fitted with multiple single over under bunks and ensuite head with vanity sink, stall shower and toilet. Down steps from the crew mess is the bow thruster bilge where starboard is access to the laundry room where three Electrolux washers and three dryers along with folding table and hydraulic oil tank are located. Aft of the laundry room is another crew stateroom too with multiple single over under bunks along with an ensuite head fitted with stall shower, vanity sink and toilet, this stateroom is in poor condition with mold and mildew present. Aft through a water tight door from the guest staterooms companionway is the garage where down steps port forward is the gymnasium. The room has minimal workout equipment along with storage shelves where all paint supplies are located. The entire interior of the vessel is completely climate controlled via 18 air handlers of which the system needs a complete service of not refit and trimmed with Cherry joinery and quality soft goods. The crew staterooms are very simple and somewhat utilitarian. The guest staterooms, saloon and dining areas are all very well designed and fitted. The sun deck is aft of the pilothouse, it's large and has the capability of housing vessels, personal watercraft but is currently fitted with a Jacuzzi and patio furniture. The deck is protected by a steel safety rail of which is corroded. Forward the sun deck is the Portuguese bridge which encompasses the exterior of pilothouse. The bridge deck is narrow yet protected by a steel safety rail. Down steps port aft from the sun deck is the main deck with custom granite topped exterior bar fitted with commercial appliances of which needs a complete refit as its suffering from exposure. Starboard is an L shaped settee while port is a barbecue and fire hydrant along with a deck leading to the bow. Forward is a breakwater, fire hydrant then the foredeck where a hydraulic dual gypsy anchor winch and ground tackle are located all of which is corroded. Starboard the main deck continues aft back to the outside bar where starboard forward is a door to enter the main saloon. Down the port aft main deck steps is the large work deck where a Grove hydraulic fully rotating and extending boom crane is located. The work deck is prepared to house multiple vessels and or watercraft and is protected by a steel bulwarks, aft is steps to the integral swim platform. Forward of the work deck is the large garage accessed from a roll up door. The garage stows a dive compressor, work bench, supplies, equipment, freezer, ice maker along with other equipment to include an access hatch to the work shop. Port and starboard forward from the work deck through water tight doors are the companionways to the engine room.

**Summary: Good - Fair**



**Machinery:**

This vessel is powered by a pair of Detroit Diesel 12V-149 naturally aspirated diesel inboard motors each producing approximately 650 horsepower at 2300 RPM. The main engines are driving Twin Disc MG 527 reduction gear transmissions each turning a ratio of 5.17:1. The main engines and all three gensets are located beneath the garage and aft work deck accessed from water tight doors and companionways port and starboard forward corners of the work deck or from the forward bilge via tunnel. The engine room is large, well laid out and in need of a good detailing, especially beneath the floor boards. The machinery overall appears to be fair to poorly maintained the bilge is very dirty with oil, water and grime along with various areas of heavy corrosion scale mostly around sea chests, shaft seals and through hull transducers. The main engines were reportedly installed in December of 2014 as long blocks which included all new exhaust pipe insulation. The exhaust systems displays varying degrees of leaks. Two gensets are located center within the engine room, one Caterpillar the other Detroit Diesel powered. The Detroit Diesel unit is inoperable, obsolete and being used for parts for the bow thruster motor. The second Caterpillar genset is aft of the engine room starboard within the water maker bilge, reportedly it was rebuilt a year or so ago however it smokes from its exhaust excessively. The main engines are fairly clean as are the two Caterpillar gensets all with typical oil leaks and average to minor corrosion. The bow thruster is powered by a Detroit Diesel 6-71 same as the obsolete genset. The bow thruster motor displays oil leaks and a fuel leak with minimal corrosion. All the machinery, main engines and gensets exhaust is dry as a result the machinery is cooled via keel coolers. The bow thruster exhaust exits from a stack immediately aft of the crow's nest. The gensets exit port and starboard corners just above the work deck while the main engines exits from the hull sides just outboard the engine room doors forward the work deck. The main engines and bow thruster motors are controlled by Mathers pneumatic controls from the pilothouse. The bow thruster Detroit Diesel motor drives a hydraulic PTO which in turn powers the hydraulic bow thruster. Starboard forward the engine room is a work shop stocked to make most repairs the vessel requires. The fuel system consists of 11 steel integral tanks, some double bottom for an approximate reported total of just over 44,000 gallons. The fuel system is fitted with multiple transfer pumps, gallon meter, centrifuge and off vessel refueling capabilities, much of the fuel pump and or transfer system displays various leaks. The machinery pulls fuel from a day tank which is plumbed to the machinery via high pressure neoprene hose and steel pipe along with Racor primary fuel filters. The fueling of the vessels tanks is from the hull side pockets immediately outboard port and starboard of the garage. The pocket areas display corrosion. The vessel is fitted with four ballast tanks, one forward the other U shaped aft and one each port and starboard mid ship. The machinery and various systems are fitted with an alarm system, audible and visual monitored from the engine room. The machinery space is protected by a manually activated Kidde 1301 fixed fire extinguisher system.

**Summary: Good - Fair**



**Electrical:**

The vessels minimal DC power is supplied via multiple batteries all sealed, age unknown. The three phase AC power is supplied by either 100 Amp 277/480 VAC shore power inlets with AED 3 Phase 75 KVa, isolation transformers or by one of two or both Caterpillar SR4 - 1100 KW gensets. The vessels electrical system consists of branch overload protected circuits, Cutler Hammer 112.5 KVa distribution transformer all via resettable breakers and replaceable fuses. The wiring where visible appears original, well loomed and secured with various wire nut connections observed. The what appears to be original Con Tech Power Systems main switch panel is located in the engine room and appears old and antiquated with sub panels in the laundry room, main galley, crew companionway, linen closet and pilothouse. Power switching at the main panel between input sources can be seamless but also can be double feed as multiple power input sources could be engaged at the same time. The electrical system is also fitted with multiple 50 Amp 125 / 250 VAC work deck outlets to power other vessels or equipment.

**Summary: Good**

**Conclusion:**

The above captioned vessel was transformed from a commercial crab fishing vessel to its current state (expedition / supply yacht vessel) in 2008 by Stabbert Shipyard in Seattle, WA. The refit was supervised by Stan Antrim and Naval Architect Boris Krillof and Associates. The vessel during the transformation was designed for expedition and vessel support. The vessel overall is suffering slightly from deferred maintenance, yet it's well outfitted for its intended use. Once the recommendations as described within the context of this report have been addressed the vessel could be considered safe for use as designed.

(949) 675-2881 office

Surveys &  
Appraisals of  
Yachts & Small Craft



**MARITIME  
CONSULTANT  
INC.**

(714) 530-7122 fax

### Hull Nomenclature

**LOA:** 149' / 157' w/ Swim Platform

**Beam:** 36'-0"

**Draft:** 8'-7"

**General Construction:** 1/2" and 3/8" steel plate hull sides welded to sixty eight 5/16" L shaped web frames with 7/16" steel bulkheads and 3/8" L shaped longitudinals. The house and pilothouse are 3/8" & 1/4" steel plate. The exterior of the vessel is coated with paint to protect the steel plating. The wetted surface of the hull has a fairly sharp entry then flattens out with minimal dead rise aft with two roll stops and sloping aft end from the keel to the transom.

**Hull Planking:** 1/2" & 3/8" Steel Plate

**Fastenings:** Welds, Electric & Gas

**Frames:** 68- Steel 5/16" L shaped 24" & 48" OC.; 7/16" Steel Bulkheads; 3/8" Longitudinals L shaped

**Superstructure:** 3/8" & 1/4" Steel Plate

**Through Hull Fittings:** 3- Steel Sea Chests w/ Butterfly and Gate Valves

**Shaft Size & Material:** 5 1/2" Aquamet Stainless Steel

**Rudder Material:** Steel Plate w/ Stiffeners

**Propeller Size:** 68 x 51 4- Blade Stainless Steel

**Number of Struts:** 2- Dual Arm

**Strut Material:** Steel

**Zinc Location:** Hull Bottom 39; Prop Nuts 1 (each); Rudders 10; Keel 8; Thruster Tube 6; Port Sea Chest 5; Starboard Sea Chest 0; Forward Sea Chest 2;

**Condition:** Fair - Poor

**Cruise Speed:** No Sea Trial

**Max Speed:** No Sea Trial

#### **Remarks:**

The above captioned vessel was surveyed in San Diego & Chula Vista, CA. The vessel was attended while afloat, underway and hauled from the water at the Marine Group. The wetted surface of the hull display slightly above average marine growth and antifouling paint with blisters. The wetted surface of the hull was sanded, repainted and various new anodes were installed. The prop speed coating on running gear and bow thruster propeller is worn. The purpose of this survey was to determine the vessels current condition and value for pre-sale and or auction. The use of this report is solely for Cole Lysaught and or Offshore Outpost, LLC and is not transferable.

(949) 675-2881 office

*Surveys &  
Appraisals of  
Yachts & Small Craft*



**MARITIME  
CONSULTANT  
INC.**

(714) 530-7122 fax

**Machinery and Tankage**

**Number of Engines:** 2                      **Make & Model:** Detroit Diesel 12V-149 (Natural)                      **Fuel:** Diesel

**Serial Number Port:** 12E20557    **Serial Number Starboard:** 12E1093

**Hours Port:** 4371 (analog)    **Hours Starboard:** 4355 (analog)

**Horsepower Each:** 970 Kw; 650 HP (rpt)                      **Year Built:**                      **Rebuilt:** 2014 Long Blocks (rpt)

**Transmissions:** Twin Disc MG 527 5.17:1                      **Port Serial #:** 3A4586                      **Starboard Serial #:** 3V4131

**Number of Fuel Tanks:** 13                      **Fuel Capacity:** 44,054 Gallons (per docs)                      **Tank Material:** Steel Integral

**Fuel Tank Location:** P & S Mid Double Bottom; P & S Forward Double Bottom; P & S Aft Double Bottom; P & S Forward Wing; P & S Aft Wing; Day Tank

**Vented:** Atmosphere

**Ballast Tanks:** 1- Forward 2551 Gallons; 1- Aft (U shaped) 7957 Gallons; P & S Mid 22,712 Gallons Each

**Type of Fuel Line:** Steel Pipe; Neoprene Hose    **Fuel Filters:** Dual Racor 1000 Series

**Fill Pipe Location:** Port & Starboard Hull Sides Outboard Garage

**Spillage:** Overboard    **Fuel Shutoff Location:** Racors; Day Tank; Remote Handles

**Carburetor:** Fuel Injection    **Flame Arrestor:** Air Filters

**Number of Potable Water Tanks:** 2    **Capacity:** 7000 Gallons

**Water Tank Material:** Steel    **Fresh Water Pump:** 2- Ebara (AC)

**Black Water Tank:** Steel 1563 & 379 Gallons (2- tanks)    **Gray Water Tank:** (Shared w/ Black Tanks)

**Bilge Pumps Automatic:**    **Location:**

**Bilge Pumps Manual:**    **Location:**

**Emergency Bilge Pumps:** 1-Ballast & 1-Fire Pump w/ 7 Bilge Suction Manifold; Submersible AC; Diesel Portable Yanmar



**Engine Room Ventilation:** 2- High Capacity Fans

**Gensets:** 2- Caterpillar SR4; 1- Detroit Diesel 6-71 / Delco E7344 (obsolete, spare parts)

**Serial Numbers:** 5DA06215 #4; 5DA06217 #2; Not Sighted #3      **KW Rating:** 1100 (2&4); 75 (3)

**Genset Hours:** 10,513 #2; 10,373 #4; #3 (obsolete)      **Fuel:** Diesel

**Water Maker:** Village Marine Tec PW 5000M (2008 Mfg)

**Oil Change System:** Gorman Pump; 2- Lube Oil Tanks 886 Gallons; 2- Waste Oil Tanks 583 Gallons

**Electrical System**

**Navigation Lights:** Electric International

**Number of Batteries:** 4-4D (sealed); 1-8D (agm); 2-4D (agm)      **Boxed:** Yes

**Voltage:** 12, 24 VDC;      240 / 480 3 Phase 60 Cycles

**DC Wiring:** 2- Wire Copper Stranded Sheathed      **Circuit Protection:** Breakers & Fused

**AC Wiring:** 3- Wire Copper Stranded Sheathed      **Circuit Protection:** Breakers

**Electrical Panel Locations:** Engine Rm.; Laundry Rm.; Galley; Crew Comp.; Linen Closet; Pilothouse

**Volt Meters:** AC & DC      **Main AC Breaker Capacity:** 100 Amp

**Additional Electrical Equipment:**

2- AED 3- Phase 75 KVa Isolation Transformers; AC Ammeters; AC Hertz Meters; AC Kilowatt Meter; Sync. Scope; Reverse Power Ind. Lights; Newmar Phase Three PT 24-75 Charger; 100 Amp 277 / 480 VAC Shore Power Inlet; 100 Amp Shore Power Cord; Cutler Hammer 112.5 KVa Distribution Transformer; APC Smart UPS 1500; Middle Atlantic Products 15 Amp Power Converter; Newmar PT 80 12 VDC Charger; 4- 50 Amp 125 / 250 VAC Power Outlets (work deck); Misc. Shore Power Cord Adapters; Victron Energy 24/40 Charger;

(949) 675-2881 office

Surveys &  
Appraisals of  
Yachts & Small Craft



**MARITIME  
CONSULTANT  
INC.**

(714) 530-7122 fax

### **Deck Equipment**

**Anchors:** 1- #1500 Forfjord (port); 1- #2000 Forfjord (starboard primary)

**Chain Size Length:** 9- Shots P & S (each) -1 1/4" Stud Link

**Rode Size Length:**

**Windlass:** HBL Industries Horizontal Dual Rope Drum & Chain Gypsy Hydraulic

**Search Light:**

**Bell:** Chrome / Bronze

**Horn:** Single Trumpet Air; Canned Air

**Swimstep:** Integral w/ Two Rails & Life Line

**Additional Deck Equipment:**

(See Pages 11-28)

### **Safety Equipment**

**Fire Extinguishers:** 27

**Type:** AB, BC, ABC Size I, II Foam, Dry, Carbon Dioxide

**Certification Date Portables:** 2018 (See Recs) **Certification Date Fixed System:** 2018 (See Recs)

**Distress Signals:** Pains Wessex Kit; Gun; 16- Hand; 3- Smoke

**Expiration Date:** 11/2020

**Carbon Monoxide Detectors:** Various AC Powered (See Recs) **Smoke Alarms:** 31 - Hard Wired System

**Life Raft:** 4- Survivtec Zodiac Solas 16 Person; XDC4EN93C708; XDCEEN47K708; XDCEEN57L708; XDCEEN53L708;

**Life Raft Certification Date:** 04/2019 (See Recs) **Life Jackets:** 30-Type I; 20- Type III; 4- Type V

**EPIRB:** McMurdo Smartfind 406 GPS EPIRB sn: 22215 w/ Hydrostatic Release

**Throwable:** 2-30" Orange Rings; 2- 24" Orange Rings; 6- Cushions

**Fire System:** Kidde 1301 Halon (Manual Release Only)



(949) 675-2881 office

Surveys &  
Appraisals of  
Yachts & Small Craft



**MARITIME  
CONSULTANT  
INC.**

(714) 530-7122 fax

**Additional Safety Equipment:**

11- Emergency Light Fixtures; Scot Fire Pump w/ Baldor AC Motor; Ships Systems Alarm System(Machinery, Day Tank Levels; Air Pressure; Bilge Water Level); Fire Hydrants (Engine Room; Galley; Crew / Guest Companionway; Main Deck Exterior Port Fore & Aft; Garage); 9 - Immersion Suits; 3- THB/ 15I Emergency Breathing Apparatus; Fire Shield Fire Alarm System w/ 9 Pull Handles & 31- Sensors; General Alarm (Pilothouse; Engine Room); Emergency Escape Hatches (Lower Crew Staterooms P & S; Guest Companionway To Garage); 2- Fire Blankets; First Aid & Medical Supplies; Philips Heart Start Defibrillator; 1- Fire Axe; Engine Room Fans Emergency Shutdown Switches; Trash Placard; No Illegal Drugs Placard; Guest Companionway Fire & Safety Plan; Scott Pressure Pack Breathing Apparatus; 2- Quest Fire Suits; 2- McMurdo S4 Rescue SART; 3- First Aid Kits; 2- Ikaros Line Throwers (Exp. 12/2021); PFD Strobe Lights; Station Bills; Forward Companionway Main Galley Fire Door;

**Navigation Equipment**

**Helm Location:** Pilothouse; Engine Room (steering only)

**Satellite Phone:** KVH Mini V-Sat; Iridium

**Call Letters:** WDJ 6061

**Sonar:**

**Fathometer:** Furuno FCV 1200 L; Furuno DFF1 Nav Net

**Direction Finder:**

**Autopilot:** Robertson AP 45

**GPS:** 2- Furuno GP 32; Garmin GPS Map 78 Hand Held; Furuno Nav Net

**Radar:** 1-Furuno Nav Net (72 nm); 1-Furuno FR 8111 8 Tone Daylight (96 nm)

**VHF Radio:** 2- Icom M604; Standard HX 751 Hand Held; 2- Icom M24 Hand Held; 1- West Marine 95

**SSB:** Icom M802

**Navtex:** Furuno NX-700

**Cellular Phone:**

**Intercom System:** Henschell Corp. (Pilothouse; Galley; ER)

**Compass:** Furuno Satellite; Dirigo Magnetic

**Loud Hailer:** Furuno

**Plotter:** Max Sea Time Zero Software; Nobeltec 9 Admiral Software; Nobeltec Admiral Software; Furuno Nav Net;

**Weather Fax:** Airmar Weather Station Sensor

**AIS:** Furuno FA-150

PO Box 3457 ~ Newport Beach, CA. 92659

9 of 58



**Additional Navigation Equipment:**

Furuno Nav Net Multifunction Display Control; 2- Furuno RD-30; Elbex EXS-126 CCTV Camera Switcher; Robertson RI 40 Rudder Angle Indicator; Icom A210 Transceiver; Icom 2 Meter Transceiver; 2- Midland Two Way Radios; KVH VIA Sat; Dell Precision T1700 Navigation Computer; Dell Precision T1700 Ship Computer; 4- Dell 20" Monitors; Wave WiFi System; Robertson S9 Jog Stick;

**Interior Accommodations**

**Total Berthing:** 12- Guest; 18- Crew    **Head Type:** 11- Head Hunter Royal Flush w/ 2 Holding Tanks

**Shower:** 10- Stall                      **Galley Location:** Forward Dining (main); Main Deck Forward (crew)

**Stove:** Vulcan 6 Burner; 1- Grill                                      **Oven:** Vulcan Dual

**Fuel:** Electric                              **Refrigerator:** True T72 3- Door SS Refer; True T49F 2- Door SS Freezer

**Microwave:** 3- Amana Commercial    **Dishwasher:** 2- CMA 180-UC Dish Machines; Miele G894 SC

**Carpet:** Yes; Linoleum Galley & Head Soles;                      **Trash Compactor:**

**Hot Water Heater:** 3- A.O. Smith 40 Gallon (each) Electric (See Recs, one has been removed)

**Climate Control System:** 2- Mitsubishi PUHY-P168TGMU-A-BS Compressors; 18- Mitsubishi Air Handlers

**Additional Interior:**

Walk In Freezer: 5' x 6' x 7'; Walk In Refer: 5' x 6' x 7'  
(See Pages 11-28)

(949) 675-2881 office

Surveys &  
Appraisals of  
Yachts & Small Craft



**MARITIME  
CONSULTANT  
INC.**

(714) 530-7122 fax

**Additional Equipment:**

**Pilothouse:**

HP Officejet Pro 8710 Printer

2- Bentley's Helm Seats

Ships Log Books

Garbage Record Book

Ships Maintenance Manual & Procedures

2- Crank Down Windows

2- Water Tight Doors

Maple Joinery

3- Routers WiFi

Misc. Paper Charts

Misc. Cruising Guides

Dynex Computer Keyboard & Mouse

Mathers Main Engines & Wing Motor Pneumatic Controls

Navigation Rules

Chart No. 1

Misc. Office Equipment

Navigation Light Panel

Carpet Sole

Levo Gage

Misc. Chart Books

Climate Control

Trim & Stability Book 04/2014

Oil Record Book

General Alarm

2- Communications Desks

Raised Settee w/ Table

Misc. Day Shapes

CFR Books 46,47,49

Ships Safety Drill Log

Fuel & Oil Records

Logitech Wireless Keyboard & Mouse

Mica Counter Tops

Chart Plotting Tools

ABS Ballast Water Exchange Book

Weems & Plath Barometer

Compass Deviation Card 04/2016

Misc. Lockers & Drawers

Overhead Red & White Lights

(949) 675-2881 office

Surveys &  
Appraisals of  
Yachts & Small Craft



**MARITIME  
CONSULTANT  
INC.**

(714) 530-7122 fax

Smoke / Fire Sensor

Dell 20" Monitor

Compressed Air Pressure Gauge

Bow Thruster Start & Stop Control

Isspro Main Engines & Thruster Motor Gauges

3- Cisco SF 100D-05 Ethernet Router

**First Mate Stateroom:**

Single Over Under Bunks

Climate Control

Port Light

Drawers

Smoke / Fire Sensor

Carpet Sole

Mica Wall Covering

Overhead Light

Rattan Chair

Bunk Light

Adrift Yamaha A/V Receiver

**Captain & Mate Head:**

Royal Flush Toilet

Linoleum Sole

Mirror

Towel Hook

Vanity Sink

Port Light

Stall Shower

Shelf

**Captain Stateroom:**

Carpet Sole

Climate Control

Double Wide Bunk

Mica Wall Covering

Port Light

Hanging Locker Shelve Unit

Night Stand

Overhead Lights

(949) 675-2881 office

*Surveys &  
Appraisals of  
Yachts & Small Craft*



**MARITIME  
CONSULTANT  
INC.**

(714) 530-7122 fax

Smoke / Fire Sensor

First Alert Safe

Crew Training Log Books

Misc. Paper Charts

Ships Drawings

Crew Manual

**Main Galley:**

Granite Counter Tops

3- SS Prep Tables

Dual Basin SS Prep Sink

Climate Control

2- Companionway Doors

Overhead Lights

Best By Broan SS Range Hood Fan

Birch Joinery

Fire Hydrant

Fire Blanket

Misc. Utensils

2- Windows

Linoleum Sole

Dual Basin SS Dishes Sink

2- Garbage Disposers

Drop Ceiling

Fire Alarm Bell & Light

2- Fire Smoke Sensor

SS Splash

Manitowoc Ice Machine

Maple Cupboards & Drawers

Trash Placard

Misc. Prep Items

Fire Alarm Pull

**Day Head:**

Exhaust Fan

Mirror

Vanity Sink

Simulated Wood Sole

Overhead Lights

Granite Counter Top

(949) 675-2881 office

*Surveys &  
Appraisals of  
Yachts & Small Craft*



**MARITIME  
CONSULTANT  
INC.**

(714) 530-7122 fax

Custom Wall Covering

2- Wall Lamps

**Dining Room:**

2- Climate Controls

2- Wood Side Boards

4- Wall Lamps

Overhead Speakers

Fire / Smoke Sensor

Window Shades

Drop Ceiling

Cherry Joinery

**Main Saloon / Bar:**

Linoleum Bar Sole

Sony STR-DB840 FM Stereo Receiver

True 24 Gallon Refer

Genesis Universal Remote Control

2- Climate Control

Window Shades

SS Sink

2- Wood Coffee Tables

Chrome Faucet

Cherry Joinery

2- Wood Dining Tables

2- Wood End Tables

Water Dispenser

Custom Wall Covering

14- Rattan Chairs

2- Danby Silhouette Wine Refers

Bloomfield Commercial Coffee Maker

Carpet Sole

Granite Bar Tops

True Kegeerator

Cherry Joinery

Drop Ceiling

Fire Alarm Bell & Light

4- Leather Sofas

Alarm Bell & Light Fixture

Sub Woofer

(949) 675-2881 office

Surveys &  
Appraisals of  
Yachts & Small Craft



**MARITIME  
CONSULTANT  
INC.**

(714) 530-7122 fax

Fire Smoke Sensor

Samsung 65" LCD TV

Aft Water Tight Door

Overhead LED Lights

5- Bar Stools

Exterior Sunbrella Cushions

8- Wall Lamps

**Crew Mess:**

Linoleum Industrial Sole

Mica Counter Tops

Frigidaire 18 Cu Ft SS Refer Freezer

L Shaped Dinette w/ Mica Table

Spun FRP Potable Water Accumulator Tank

Walk In Freezer & Refer Units

Directv Receiver

Dual Basin SS Sink

Mica Wall Covering

Misc. Utensils

Water Tight Door Thruster Bilge

1- Wood Bar Stool

2- Directv Receivers

Manitowoc Ice Machine

Fire Alarm Pull

Chrome Sink Faucet

4- Rattan Barrel Chairs

Carpet Sole

Surround Speakers

Maple Cupboards & Drawers

Garbage Disposer

Climate Control

Spare Light Bulbs

Amana Commercial Microwave Oven

Fire Alarm Pull

Samsung LCD TV

Miele G894 Dishwasher

Misc. Dishes

Overhead Lights

Misc. Equipment Manuals

(949) 675-2881 office

*Surveys &  
Appraisals of  
Yachts & Small Craft*



**MARITIME  
CONSULTANT  
INC.**

(714) 530-7122 fax

**Engineer Stateroom:**

Single Over Double Under Bunks

Hanging Locker

Melamine Headliner

Overhead Lights

Companionway Door

Portable Fan

Dresser

Smoke Detector

Carpet Sole

Mica Wall Covering

CO Alarm

Coat Hooks

**Crew Stateroom (Port of Crew Mess):**

4- Single Over Under Bunks

Stand Up Mirror

Smoke Fire Sensor

Towel Bars

Melamine Headliner

Hanging Locker

Companionway Door

Overhead Lights

Coat Hooks

Carpet Sole

**Crew Head:**

Stall Shower

Woven Sole Cover

Vanity Sink

Mica Wall Covering

Overhead Light

Exhaust Fan

Mirror

Smoke Detector

Melamine Headliner

Electric Toilet



(949) 675-2881 office

Surveys &  
Appraisals of  
Yachts & Small Craft



**MARITIME  
CONSULTANT  
INC.**

(714) 530-7122 fax

**Linen Locker:**

Distribution Transformer

AC Sub Panel

Cleaning Supplies & Tools

Random Linens

Carpet Cleaning Machine

Overhead Light

Kitchen Aid Mixer

**Guest Staterooms; Starboard (3); Port (3) Total of Six:**

2- Single Bunks

Hanging Locker

Climate Control

Carpet Sole

Overhead Lights

Bunk Covers

Custom Wall Coverings

Cherry Joinery Trim

Companionway Door

Samsung 32" LCD TV

Window

Norman Window Shade

Night Stand

Sentry Safe

Drop Ceiling

Smoke Fire Sensor

CO Alarm

Make Up Air Vents

2- Yoga Mats

**Ensuite Guest Stateroom Heads; Starboard (3); Port (3);**

Royal Flush Toilet

Vanity Sink w/ Locker

Simulated Wood Sole

Custom Wall Covering

Overhead Light

Fiberglass Stall Shower

(949) 675-2881 office

Surveys &  
Appraisals of  
Yachts & Small Craft



**MARITIME  
CONSULTANT  
INC.**

(714) 530-7122 fax

Aluminum Shower Door

Mirror

Exhaust Fan

Drop Down Ceiling

Make Up Air Vents

Companionway Door

**Dry Storage Room:**

Steel Companionway Steps

Carpet Sole

2- Refer Compressors Water Cooler

Dry Foods

Smoke Fire Sensor

Steel Shelves

**Port Lower Crew Stateroom:**

4- Over Under Single Bunks

Vanity Sink

Metal Shelves

Mirror

Drop Ceiling

Emergency Escape

Towel Ring

Glass Shelf

Towel Bars

Cherry Joinery Trim

Vanity Light

Chrome Faucets

SS Hand Rail

Overhead Lights

Aluminum Storage Racks

Fire Alarm Pull

Painted Steel Bulkheads

Carpet Sole

Custom Wall Covering

Climate Control

Towel Bars

Dresser

Smoke Fire Sensor

(949) 675-2881 office

Surveys &  
Appraisals of  
Yachts & Small Craft



**MARITIME  
CONSULTANT  
INC.**

(714) 530-7122 fax

Overhead Lights

Companionway Door

**Port Lower Crew Ensuite Head:**

Royal Flush Toilet

Stall Shower

Industrial Sole Cover

Overhead Light

Aluminum Shower Door

Drop Ceiling

Custom Wall Covering

**Laundry Room:**

3- Electrolux EFME 517SIWO Clothes Driers

3- Electrolux Clothes Washers

SS Pre Wash Sink

Folding Table

Climate Control Air Handler

Miele Rolling Iron

4- Hydraulic Spin On Filters

Laundry Supplies

Carpet Sole

Iron Board

Overhead Lights

Smoke Fire Sensor

Hydraulic Oil Tank

**Starboard Lower Crew Stateroom:**

Smoke Fire Sensor

1- Set Of Over Under Single Bunks

Drop Ceiling

Emergency Escape Hatch

Climate Control

Vanity Sink

Metal Shelf Unit

Carpet Sole

Overhead Lights

Hanging Locker

(949) 675-2881 office

*Surveys &  
Appraisals of  
Yachts & Small Craft*



**MARITIME  
CONSULTANT  
INC.**

(714) 530-7122 fax

Dresser

Message Table

**Starboard Lower Crew Ensuite Head:**

Royal Flush Toilet

FRP Stall Shower

Industrial Sole Cover

Overhead Light

Aluminum Shower Door

Drop Ceiling

Custom Wall Covering

**Gymnasium / Tackle Room:**

FRP Potable Water Accumulator Tank

AO Smith Potable Water Heater

Carpet Sole

2- Wire Steel Shelf Units

Cleaning Supplies

Misc. Fishing Rods

Misc. Plastic Storage Bins

Nordic Track Treadmill 1500

Misc. Loose Weights

Climate Control

Misc. Lifting & Securing Straps

Crimp Tool

9- Plastic Shelves

Domyos Punching Bag

Paint & Supplies

Wood Pilot Ladder

Smoke / Fire Sensor

Steel Companionway Steps

Overhead Lights

3- Furniture Dollies

Spare Outboard Motor Propellers

2- Portable Hand Bilge Pumps



**Sun Deck:**

Painted Nonskid Deck

37" High Steel Hand Rail w/ Dual Life Lines

2- Sets Of Steps To Portuguese Bridge

3- FRP Deck Boxes

Igloo Ice Chest

Port Aft Steps To Main Deck

2- LED Work Deck Flood Lights

2- Umbrella Bases

Deck Drains

2- Aluminum Benches

2- Sail Shade Masts

Wash Down Spigot

4- Aluminum Settees

4- Zodiac 16 Person Life Rafts

2- Plastic Battery Boxes w/ 4D Batteries

Steel Pilothouse Top Ladder

Braided Tow Line

2- Aft Pilothouse Deck Lights

Steel Boat Chalks

Pilothouse Aft Vent w/ Dampener

2- LED Work Deck Flood Lights

6- Aluminum Lounge Chairs

2- Aluminum Dining Tables w/ 8 Chairs

Legacy 7- Person FRP Jacuzzi

Aft Facing CCTV Camera

6- Aluminum End Tables

**Portuguese Bridge:**

2- Sets Of Steps To Main Deck

2- Pilothouse Doors

Painted Nonskid Deck

42" Steel Safety Rail

2- Life Rings w/ Lanyards

Cabin Side Courtesy Lights

(949) 675-2881 office

Surveys &  
Appraisals of  
Yachts & Small Craft



**MARITIME  
CONSULTANT  
INC.**

(714) 530-7122 fax

**Pilothouse Roof:**

Steel Crows Nest

KVH Tracvision Antenna

Airmar Weather Station Sensor

2- Radar Antennas

7- FRP Antennas

3- Sodium Forward Flood Lights

Navigation Lights

EPIRB w/ Hydrostatic Mount

KVH Tracphone V7 Satellite Antenna

Iridium Phone Antenna

Nonskid Deck

Satellite Compass Antenna

4- GPS Antennas

Steel Antenna Mast

Icom Antenna Tuner

2- Aluminum Dinghy Chalks

**Main Deck Exterior:**

Wet Bar

5- Bar Stools

True Kegerator

Manitowoc Ice Machine

Aft Facing Granite Bar Top

Steel Bulwarks 39" High

Steel 39" High Safety Rail w/ Double Life Line

4- Steel Mooring Cleats

2- Portuguese Bridge Ladders

4- Plastic Drums w/ Lids

2- Stereo Speakers

Granite Bar & Counter Tops

Wood Bar Rail

True 24 Gallon 2 Door Refer

Sunbrella Headliner

2- Fire Hydrants

Work Deck Stairs

Cabin Side Lights

2- Bollard Cleats

Plastic Box w/ Misc. Spare Mooring Lines

2- Bar Fly Fans

Vinyl Aft Deck Sunshade

(949) 675-2881 office

*Surveys &  
Appraisals of  
Yachts & Small Craft*



**MARITIME  
CONSULTANT  
INC.**

(714) 530-7122 fax

Saloon Companionway Door

L Shaped Settee

SS Sink

Wood Cupboards & Drawers

Painted Nonskid Deck

Wash Down Spigot

Sun Deck Stairs

Deck Drains

Steel Breakwater

Misc. Fuel Jerry Jugs

Big Green Egg Barbecue

**Foredeck:**

Painted Nonskid Deck

Steel Breakwater & Bulwarks

Bollard Cleat

Cabin Side Light

2- Freeman Chain Locker Hatches

2- Anchor Safeties

Mooring Lines

Hydraulic Anchor Winch Dual Gypsy

Wash Down Spigot

**Work Deck:**

Grover RT-60 Hydraulic 36,000lbs 24'-60' Boom Extension Crane

4- 50 Amp 125 / 250 VAC Power Outlets

Life Jackets

Misc. Dock Lines

3- FRP Deck Boxes

Cargo Net

Steel Bulwarks

P & S Engine Room Companionway Water Tight Doors

2- Bulwark Gates

Tank Vents

Transom Swim Platform Steps

Wash Down Spigot

20- Bulwark Mooring Cleats

(949) 675-2881 office

*Surveys &  
Appraisals of  
Yachts & Small Craft*



**MARITIME  
CONSULTANT  
INC.**

(714) 530-7122 fax

6- Blue 55 Gallon Plastic Drums

18- Tie Down Deck Pads

4- Transom Bait Tanks

Main Deck Stairs

Tow Line

2- Transom Showers

Aluminum Swim Ladder

**Garage:**

Painted Nonskid Deck

CSPS SS Tool Chest

2- Steel Storage Racks

Back Board

Brownies Portable Dive Compressor

Misc. Ratchet Straps

SS Wash Sink

Gym Water Tight Companionway Door

Fire Alarm Bell & Light

Sail Shade Sun Deck

3- Insulated Kill Bags

Frogg Togg Rain Suits

6- Steel Mooring Cleats

2- Water Tight Deck Hatches

Painted Nonskid Deck

Garage Entrance w/ Roll Up Door

2- Plastic Filet Boards

Immersion Suits

Aluminum Ramp

FRP Storage Locker w/ Misc. Supplies

Misc. Shackles & Lifting Equipment

Emergency Fuel Shutoff Valve Handles

1- Shop Vac

Misc. Ladders

Manitowoc Ice Machine

Hull Side Vents

Nuvair Dive Tank Compressor

2- Master Lock Tool Chests

Misc. Gaffs

Yeti Ice Chest

Steel Skiff Chalk



(949) 675-2881 office

Surveys &  
Appraisals of  
Yachts & Small Craft



**MARITIME  
CONSULTANT  
INC.**

(714) 530-7122 fax

Ryobi Pressure Washer

6- Dive Tanks

2- Yeti Ice Buckets

Misc. Aluminum Boat Hooks

Misc. Snorkel Equipment

Work Shop Hatch

Fire Hydrant

2- Wood Work Benches

Fire Alarm Pull

P & S Fuel Tanks Fill Access Points

2- Fire Sensors

**Workshop:**

SS Work Bench

1- Air Circulating Fan

5- Steel Shelf Racks

Miller Portable Welder

Misc. Spare Parts

Misc. Power Tools

Overhead Lights

Garage Overhead Access Hatch

Ryobi Bench Grinder

Folding Plastic Table

SUP Board

Misc. Fishing Tackle

Misc. Rubber Boots

2- Outriggers

Steel Cable Lifting Bridle

Cleaning Supplies

Water Tight Interior Bulkhead Door

Frigidaire Top Load Freezer

Misc. Lines

Bench Vise

2- CSPA SS Tool Chests

Chicago Electric Drill Press

Misc. Fasteners & Clamps

Spare Hose

Double Bottom

Heat / Smoke Sensor

Steel Decking

CO Alarm

(949) 675-2881 office

Surveys &  
Appraisals of  
Yachts & Small Craft



**MARITIME  
CONSULTANT  
INC.**

(714) 530-7122 fax

Misc. Tools

Engine Room Log Books

**Bow Thruster Bilge:**

FRP Deck Grate

Sting Ray Sea Water Pump

Grundfos Hot Potable Water Circ. Pump

2- Edson 120 Diaphragm Pumps

Headhunter TW-HMX 524 LP USCG Type II MSD Tidal Wave

Lincoln Electric 100 HP AC Hydraulic Pump Motor w/ Vickers PTO

Benshaw Solid State Motor Controller

Bow Thruster Motor Twin Disc Gear Box

Detroit Diesel 6-71 Bow Thruster Motor sn: 6A359670; 1846 Hours

Western Fluidyn Bow Thruster Motor PTO w/ Twin Disc Manually Actuated Drive

Headhunter MSD Control Panel / Alarm

Fire Alarm Pull & Light

7- Wide Lite Transformer Ballasts

Compressed Air Outlet w/ Regulator

**Engine Room:**

Official Number Placard

Goulds Main Fuel Transfer Pump

2- Roper Pump w/ Baldor AC Motor Fuel Transfer Pumps

Fuel Transfer Manifold

Diamond Plate Deck

Overhead Lighting

Fuel System Priming Pump

Hand Fuel Pump

Main Engines Coolant Recovery Tanks w/ Sight Tubes

2- Compressed Air Accumulator Tanks

Flax Propeller Shaft Seals

2- Quincy 325 Dual Piston Air Compressors

2-Shatco 10 hp Steering System Pumps & Hydraulic Oil Reservoirs

2- Potable Water Filters

Gould Pump w/ Baldor Motor Ballast Pump

(949) 675-2881 office

Surveys &  
Appraisals of  
Yachts & Small Craft



**MARITIME  
CONSULTANT  
INC.**

(714) 530-7122 fax

Boss 2T/107 Bilge Oil Separation System Recovered Energy

Isspro Manual Main Engine Gauges

Westfalia Separator OTB200066 Fuel Centrifuge

2- Genset Coolant Tanks w/ Level Alarms

2- Main Engine Coolant Tanks w/ Level Alarms

Emergency Steering

Bench Vise

Day Tank Murphy Alarm Switch Low Level Alarm

Overhead Lights

Mathers Pneumatic Main Engine Controls

Dry Exhaust Pipe Heat Blankets

Ballast Tank Manifold

Fire Hose

Work Shop Water Tight Door

Fire Alarm Pull & Light

2- Gensets

**Water Maker Bilge:**

Misc. Spare Parts

Shelves & Racks

Spare Plumbing Supplies

Twin Main Engine Pyrometers

Oil Pump Suction Hoses

2- Inspection Dead Lights

Helm w Rudder Jog Stick & RAI

Work Bench

Fuel Tanks Level Sight Tubes

Oil Placard

Potable Water Tanks Level Sight Tubes

2- Propeller Shaft Seals Sumps & Pumps

Racor Fuel Filter Vacuum Gauges

Levo Gage

Tunnel Bilge Water Tight Door

Painted Bilge

Misc. Tools

Overhead Lights

Spare Filters

Water Maker Media Filter

(949) 675-2881 office

*Surveys &  
Appraisals of  
Yachts & Small Craft*



**MARITIME  
CONSULTANT  
INC.**

(714) 530-7122 fax

Diamond Plate Decking

Painted Bilge

Village Marine Water Maker

Genset

**Lazarette / Rudder Bilge:**

Painted Bilge

Spare Parts Plumbing, Oil Supplies

Oil Boom

Tiller Arm Tie Bar

2- Rudder Tiller Arms

Flax Rudder Seals

2- Hydraulic Steering Rams

Ballast Tank

Spare Hose

Rudder Post Deck Hatches

**Misc.:**

Steel Upper & Lower Hull Side Half Round Rub Rail

2- Hull Bottom Roll Stops

4- Blade Bronze Bow Thruster Propeller

Bow Anchors Hull Side Strike Plates

Misc. Equipment Manuals



**Recommendations:**

**Immediate Action Items:**

1. Service and or replace all old and expired breathing apparatus and hoods.
2. Service / grease all bilge pump suction valves to ease operation.
3. The starboard aft engine room emergency lights are too dim. The water maker bilge emergency light is inoperable. The tunnel bilge after emergency light is inoperable.
4. Service and certify the four Zodiac 16 person life rafts. Replace the expired hydrostatic releases.
5. Service and tag the fixed manual release fire extinguisher system which was last serviced in February of 2018. The system is only manually operated and is not fitted with fan dampeners or machinery shutdown circuits.
6. The workshop portable fire extinguisher has leaked down and has been recalled by the manufacturer.
7. Replace the worn vessel name on all Type IV personal flotation devices as needed and attached lanyards as required.
8. Service and tag all portable fire extinguishers.
9. Inspect and confirm integrity of all survival immersion suits.
10. Replace the old, worn and corroded sun deck stainless steel life lines.
11. The McMurdo EPIRB battery and NOAA registration along with the hydrostatic release have all expired.
12. The port main deck forward outboard Portuguese bridge deck steps one safety rail stanchion at deck connection has failed due to corrosion.
13. The two McMurdo S4 rescue SART batteries have expired.
14. The fire sensor / alarm system throughout the vessel has to be gone through and all inoperable sensors replaced.

**Maintenance Items:**

15. The port and starboard propeller shaft flax packing gland assemblies have just been repacked the port however leaks too much and needs to be addressed by adding another packing ring. Treat and protect the corroded surfaces of the glands and surrounding area. Consider install sling guards over the top of the glands.
16. Potable water pressure pump #1 weeps from its discharge plumbing connection to the filter housing.
17. The Gould main ballast water pump leaks from its seals, corrosion is present. Rebuild the pump.
18. The engine room bilge has been de-watered now it needs to be steam cleaned to remove all residue, chip, prime and paint all corroded surfaces of hull plate and hull structural members as needed. Keep the bilge clean and dry.
19. The BOSS bilge oil separator system is inoperable.
20. The Elbex CCTV camera system is inoperable.
21. The engine room bilge especially around and beneath the main sea chest, fire and ballast pumps and beneath and adjacent to the propeller shaft packing gland assemblies all display heavy corrosion, scale



- and metal loss. Clean, needle gun the areas, inspect the hull plate integrity and replace if needed. Prime and paint all bare and or corroded steel.
22. All steel sea water piping ballast, bilge suction and fire system as needed should be descaled inspected for metal loss, primed and repainted.
  23. The port engine room overhead overboard discharge plumbing display corrosion and leaks as does the water maker brine discharge line.
  24. The port outboard engine room companionway atop the lube oil tank and within the tank margins display corrosion and scale the starboard same companionway is not as bad. Descale, prime and paint the corroded surfaces.
  25. The Village Marine Tec water maker operates however needs new membranes and a complete service. Corrosion is observed at much of the system, as well as leaks. The high pressure pump drive belt age is unknown. The brine discharge line hard pipe at port forward engine room overhead discharge manifold leaks from pin holes.
  26. The water maker bilge displays heavy scale, needle gun, inspect amount of metal loss, prep and repaint. Replace steel plate if needed.
  27. The bilge AC receptacles are not GFI protected. Wire all bilge AC receptacles to GFI circuit breakers.
  28. Within the lazarette / steering bilge, descale, needle gun, prime and paint all corroded surfaces to include the rudder logs as needed.
  29. The starboard rudder hydraulic steering ram weeps oil from its seal.
  30. The starboard mid double bottom fuel tank discharge butterfly valve handle is missing. The upper discharge ball valve handle is missing too. The port mid double bottom fuel tank upper discharge ball valve handle is missing.
  31. The port and starboard forward double bottom fuel tank main discharge butterfly valves are frozen closed.
  32. The port and starboard forward double bottom fuel tanks quick disconnect ports inline ball valves are frozen closed.
  33. The tunnel bilge immediately forward the engine room displays heavy hull plate scale and metal loss immediately adjacent to the 200 KHz transducer. Descale, needle gun and inspect the hull plate, replace plating if needed, prime and repaint the bilge. The after section of the tunnel bilge displays standing water, dewater and inspect.
  34. The bow thruster bilge adjacent to the forward sea chest displays heavy scale within the hull plate. Descale the area check the plating condition, replace plating if needed, prime and repaint the bilge.
  35. Service the Headhunter Tidal Wave black water treatment system. The bleach pump leaks. Various system plumbing connections have splash zone putty applied. The control panel touch screen is inoperable. Restore the system to full operating condition.
  36. There's corrosion and scale of the hull plate beneath and forward the bow thruster tube. Descale, inspect hull plate, prepare and repaint.
  37. Bow thruster bilge sea chest after removing unused valves and associated obsolete piping and install blank plates, needs to be chipped, primed and repainted.
  38. The bow thruster diesel motor coolant tank displays mostly water and little coolant. Flush the cooling system, refill with appropriate water and coolant mixture after pressure testing the cooling system for leaks.



39. The bow thruster Detroit Diesel engine drips oil from the exhaust manifold to discharge pipe joint. Have a qualified marine mechanic examine and advise.
40. The main engine pilothouse helm port and starboard main engine oil pressure gauges are inoperable.
41. Install CO alarms within the engine room and water maker bilge.
42. The Danby silhouette beverage refer forward the main galley top half does not chill.
43. The First Mate and Captain stateroom AC receptacle tests no ground.
44. The dry storage room beneath the decking displays corrosion and dried salt water crystals. Clean, descale, prep and repaint the area.
45. Crew stateroom port of crew mess the center starboard AC receptacle tests reverse polarity.
46. Crew head main deck level AC receptacle GFI breaker is inoperable.
47. Replace any and all wire nut electrical wire connections with crimp type connectors.
48. Dry storage room port side outboard of the companionway steps the sea water discharge for the refer system ball valve to PVC line connection is frozen.
49. The Portola stateroom head vanity sink faucets has minimal water flow. Check and clean all faucet aerators throughout the vessel to include shower heads to remove hard water and scale deposits.
50. The Furuno Nav Net sounder is inoperable.
51. The electronics batteries aft of the pilothouse outside appear old, weathered and in poor condition with corroded cable connections. Replace the batteries, clean and protect the cable connections and replace the weathered boxes.
52. Throughout the exterior of the vessel needle gun, descale, prime and repaint all corroded surfaces of the vessel, decks, bulwarks, rails, stanchions, steps, breakwaters, tank vents, fills, pipe elbows, etc.
53. The port and starboard forepeak chain lockers display corrosion, excessive amounts at the steps. Remove all the chain, needle gun the bilges, descale, check plate condition, prepare and repaint.
54. The aft ballast tank has water present, what is visible of the interior of the tank from the port and starboard work deck water tight hatches is allot of corrosion and scale to include metal loss. Dewater the bilge, closely inspect for excessive plate and corrosion damage, prepare, prime and repaint the entire tank, replace steel plate if needed.
55. The Grover work deck crane The boom end hydraulic hose reel outboard side one hose connection leaks.
56. The port and starboard hull side fuel tanks fill and vent wells display excessive corrosion of the well plate, vent and fill pipes to include the fill pipe butterfly valves. Restore the wells and all piping and valves to original, prepare and paint the areas. Possibly devise some type of exterior door to keep sea water from entering the well area.
57. The starboard main engine one keel cooler line butterfly valve is missing a handle.
58. Laundry room beneath the decking and atop the lower black water tank hydraulic oil residue and light corrosion are present, clean away oil and treat corroded surfaces.
59. The Gould main fuel system transfer pump weeps from its seal.
60. Sea chests, exercise and lubricate all valves.
61. Renew the Prop Speed antifouling coating used on the main propeller shafts, propellers and bow thruster propeller.
62. The port and starboard propeller shaft tubes trailing end cutless bearing retaining ring bolts seizing wire is either missing or worn, replace all.



63. Paint the propeller shaft tubes water scoops and tunnels.
64. Steering pump engine room on control switch is broken off.
65. The starboard main engine will run up to only 1300 RPM as the governor is not fully operational.
66. Center forward in engine room against the bulkhead is a small sump box with pump. The pump operates however does not move water.
67. Port & center aft engine room bulkhead are various adrift unused wires.
68. Install flame shields to all Racor primary fuel filter bowls.
69. Have a qualified marine electrician perform a comprehensive electrical survey. The electrical system is old the main engine room switching panels are dirty. The switching panel in the engine room is wired for four gensets of which there are three one of which is inoperable and obsolete.
70. Immediately forward the Boss oil bilge water separator a discharge hose at PVC tee leaks.
71. Starboard forward engine room completely go through the fuel transfer system, label all valves and pipes, repair all leaks, free frozen valves and ease use of remaining.
72. The age of all the engine room and water maker bilge batteries is unknown, load test all to determine true condition.
73. The engine room mounted batteries have numerous small gauge wire connections to posts. Install a remote power post to relocate all small gauge wires away from the batteries to allow the cables to make proper connections.
74. Draw the port and starboard propeller shafts, inspect for corrosion damage in area of flax packing material, service as needed. Inspect the steel propeller shaft hull tubes for corrosion damage. Reportedly when the flax material was removed from the gland assemblies during August 2020 haul the shafts were inspected and all was fine.
75. The engine room aft bulkhead upper air compressor motor power cable conduit connection is adrift.
76. The main engines exhaust mufflers show evidence of leaks as the heat insulation and engine room overhead display black exhaust gas residue.
77. The water maker bilge two 8D batteries cable connections are secured with wing nuts, replace with hex type nuts. The battery box covers are missing.
78. Gensets 2 and 4 display exhaust gas leaks within the water maker bilge.
79. Genset #2 keel cooler gate valves leak from their stems, rebuild or replace the valves with new.
80. Genset #2 start stop switch is loose.
81. The bow thruster lube oil tank leaks and the oil level is low.
82. The bow thruster bilge forward most potable water heater as been removed due to failure.
83. Strap the remaining bow thruster bilge potable water heater in place.
84. The bow thruster motor return fuel line transition from blue hose to hard line tubing leaks beneath the air starter.
85. The laundry room center clothes washer replace the leaking supply water valves. Clean all clothes dryer lint screens.
86. The engine room main AC power source panel breakers are not fitted with a safety to prevent from double feeding the panel with more then one power source.
87. Genset #2 smokes excessively from its exhaust, under load and or not. The unit reportedly can stall out with a heavy load. The genset motor displays evidence of recent work, like possibly a rebuild. Have a qualified marine mechanic examine and advise as to the cause of the smoking.





88. Steering pump #1 reportedly operates the steering mechanism faster than pump #2. When steering pump #1 control switch is set to local position pumps # 1 & 2 operate even if pump #2 control switch is in the remote position.
89. The compressed air system leaks down and the compressors cycle.
90. Immediately aft of the engine room fuel centrifuge is a black DC rocker switch which is not labeled and missing a cover plate.
91. The bow thruster pilothouse helm start function is inoperable.
92. The bow windlass should be serviced, chipped, primed and painted.
93. The walk in refer freezer lower compressor in the dry storage bilge is very corroded at the sea water cooling coil. The sea water discharge line appears to weep water atop the compressor, restore all to original.
94. The two bow anchor chain haws pipes are corroded, their integrity is unknown.
95. The main deck aft exterior wet bar Manitowoc ice machine and refer are all inoperable. The entire bar area is weathered and water damage, it is due for a complete refit.
96. The main deck aft drain which is aft and above the garage door is very corroded and leaks.
97. The Mitsubishi outdoor climate control units within the garage need a complete servicing as corrosion is present, no recent service is evident and the starboard unit is currently inoperable. The entire climate control system throughout the vessel needs to be serviced and or repaired as needed as many units display 5301 fault code at their thermostat control. Air handler units are dirty including return air filters. Some air handlers are poorly installed as return air ducting is poorly designed and or not even in the same room where the discharge ducting is installed, namely the lower starboard crew stateroom and laundry room.
98. The crew mess starboard AC receptacle tests No Ground. The crew mess AC receptacles are not GFCI protected.
99. The engineer stateroom forward AC receptacle has no cover plate.
100. Crew head port of crew mess vanity sink hot water supply angle stop valve weeps. The shower hot water valve stem weeps.
101. The saloon wet bar Manitowoc ice maker is inoperable as it overflows.
102. Prove the satellite TV antenna operational, some Directv receivers are missing while others are not wired. A "No RF" fault code is displayed at the antenna control.
103. The main galley two CMA dish machines are inoperable.
104. The main galley range hood is now wired to a power source via extension cord plugged directly into an AC receptacle.
105. The two dining room Danby Silhouette wine refers do not chill and one has a failing LED display.
106. The main galley AC receptacles are not GFCI protected.
107. Replace all AC powered CO alarms throughout the vessel with ABYC and NFPA approved CO alarms within all stateroom guest and crew plus in the main saloon.
108. The Furuno Nav Tex NX-700 does not power up.
109. The copilot Furuno RD-30 depth & sea water temperature readings are inoperable.
110. Confirm operational the Wave WiFi system, Iridium satellite phone along with WiFi access points.
111. The wetted surface of the hull displays plate pitting up to 3/16" deep in an area 4' long by 5' wide three feet centerline forward of the two fixed mounted through hull transducers.



- 112.** After water blasting the wetted surface of the hull tube worm and mussel growth residue remained along with antifouling paint blisters which expose the bare steel hull plate. Reportedly the wetted surface of the hull was sanded with 36 grit knocking off marine growth and heads of paint blisters. The antifouling paint was not completely removed throughout the wetted surface of the hull but was in select areas per captain. New antifouling paint was applied.
- 113.** Gensets 2 and 4 cooling water level alarms are inoperable.
- 114.** GFCI protect all head AC receptacles.

**Suggestions / Observations:**

- A.** The Roper fuel transfer pump within the engine room is not wired.
- B.** The age of the batteries throughout the vessel are unknown, load test all to determine their true condition.
- C.** The water maker system some wiring, tube and hose runs are not well routed and or secured.
- D.** The water maker room bilge displays evidence of a previous high water event 14-20" high.
- E.** Plumb the bow thruster bilge two potable water heaters T&P valves to the lowest section of the bilge.
- F.** The bow thruster diesel engine exhaust piping is fitted with old poor quality heat shield material which may be asbestos.
- G.** Aft of the bow thruster bilge sea chest are numerous unused pipes and plumbing, consider removing or labeling as such.
- H.** Clean all climate control system air handlers return air filters and discharge ducting.
- I.** Starboard lower crew stateroom one drop ceiling panel is missing another is displaced.
- J.** Throughout the vessel interior repair or replace the broken locker doors and drawer pulls.
- K.** The First Mate stateroom port light has one broken dog.
- L.** If the potable water faucets have not been used for sometime they will discharge rusty water momentarily since the water lines are comprised of steel pipe and PVC. The water tanks are steel as well.
- M.** The interior perimeter of various staterooms and heads companionway doors the wood casing and or trim was never installed.
- N.** The pilothouse starboard upper most VHF radio has no position data.
- O.** Various pilothouse windshields display evidence of leaks and corrosion with interior wood water stains.
- P.** Within the pilothouse two locker doors are missing and or adrift.
- Q.** The starboard crows nest DC spreader light is inoperable.
- R.** The center forward facing sodium flood lights are inoperable.
- S.** The wiring within the crows nest is not well loomed, routed or secured. Many wires are tight through holes which could accelerate chaffing. Most wire raceway holes are not sealed to keep water from entering.
- T.** The main deck aft exterior bar the two fly fans are very corroded and missing light lenses, plus they're inoperable.
- U.** Mark the starboard bow anchor chain lengths.



- V. The pilothouse steel water tight doors are not fitted with gas openers as a result their use in a sea way may be dangerous.
- W. The port and starboard hull side half round rub rails at and above the waterline display numerous dents.
- X. The port and starboard propeller shaft seal sump pump boxes below are very corroded and the pumps are adrift.
- Y. Label the non labeled AC sub panels circuit breakers as needed.
- Z. The engine room main AC switch panel "Phase A" indicator light is inoperable.
- AA. Repair inoperable bilge lights as needed. Replace current bilge light bulbs which are operational yet are too dim to properly illuminate an area, namely the tunnel bilge.
- BB. There are numerous valves within the engine room above and below deck as well as in the overhead. Label all valves and flow directions on piping including fluid type within.
- CC. The backside of the port and starboard transmissions, propeller shafts and couplings along with the surrounding areas are all very corroded from years of slinging sea water from the propeller shaft seals.
- DD. The intercom system between the engine room and pilothouse is inoperable.
- EE. Replace the port and starboard potable water tanks level sight tubes to better view tank levels.
- FF. Systems alarm panel forward overhead engine room replace inoperable indicator lights as needed.
- GG. Genset #2 oil pan bolts leak oil.
- HH. Repair inoperable interior and exterior lighting as needed.
- II. The starboard lower crew stateroom displays torn carpet and is dirty with mold and mildew. The head is not fitted with an exhaust fan and the room is not plumbed to a fresh / make up air source.
- JJ. The starboard lower crew head toilet wiring and relay are adrift.
- KK. Genset #2 two sensor wires are unused and adrift outboard the crank pulley.
- LL. Better secure the drive belt guards at the two engine room air compressors.
- MM. The starboard transmission Mathers pneumatic actuator has a rag wrapped around.
- NN. The sun deck jacuzzi weather cover is wasted.
- OO. The foredeck wash down spigot valve is frozen and the handle is wasted.
- PP. The port anchor chain is very corroded and the length marking are worn off.
- QQ. The main deck port aft outboard fire hydrant hose and locker are interior are dirty with rust scale and debris.
- RR. Label the garage overhead PVC ball valves as needed.
- SS. The crew mess refer is moldy mildewed and the door magnetic gasket is wasted.
- TT. The crew mess dinette seat cushions are wasted. Replace missing cabinet hardware as needed.
- UU. The crew head outboard port of the crew mess stall shower is corroded.
- VV. The port and starboard lower crew staterooms are not fitted with make up air supplies, nor are the heads fitted with exhaust fans. The spaces become stagnant.
- WW. The saloon audio video universal remote control system is obsolete.
- XX. The saloon wet bar sink P trap weeps.
- YY. Repair the broken window shade pulls as needed within the saloon and dining rooms.
- ZZ. The Philips Heart start defibrillator battery is missing, re-certify the unit.
- AAA. Repair the inoperable interior locker and drawer hardware as needed.
- BBB. The garage Manitowoc ice machine operates however is old, corroded and is missing a panel. The water supply line weeps.



- CCC.** Remove the old unused Group 24 battery from the garage.
- DDD.** The Grundfos hot potable water circulating pump and plumbing connections are corroded especially the check valve which may weep.
- EEE.** The main galley is dirty, especially appliances which are dirty, some are corroded. Cabinets are worn and dirty including refers and freezer. Deep clean all or refit as needed.
- FFF.** The captain / mate head toilet flush cycle is too long, remove rag from backside of toilet.

**Notes:**

- The fuel, potable water, and raw waste holding tanks were not emptied nor filled during this survey. Due to the location of the tanks, a total inspection could not be performed, as a result, an opinion as to their condition could not be rendered.
- The Yanmar diesel powered portable dewatering pump was not started however it was confirmed the motor is not frozen.
- The interior of the propeller shaft tubes were not inspected.
- There was no interior inspection of any tank, fuel, potable water, ballast, black or gray water.
- The main AC switch panel is labeled with Genset #1 however no genset is aboard.
- Hull sides interior and overhead areas were once all coated with a spray on insulating foam, most remains however some areas it has been removed.
- The fire alarm system was tested from all station pulls however not all sensors were tested.
- The Brownies portable dive compressor was not tested.
- The vessel was docked starboard side to as a result the port hull side was not sighted from dock level only from the hard.
- The hull bottom plate was randomly (no grid pattern testing was performed) audio gauge tested by Decisive Testing at the Marine Group in Chula Vista, CA. The results of the audio gauge test are under separate cover.
- Vessel MMSI #: 368657000
- Tonnage Certificate issued August 24, 2017, San Diego, CA per Rina Services, S.P.A..
- Previous ship name was "Shelikof". The vessel was a Bering Sea crab fishing vessel.
- Panama Canal Ship ID #: 6005632.
- The mechanical survey of the main engines was performed by Valley Diesel. The gensets were not surveyed by a qualified marine mechanic. The mechanical survey will be under separate cover.
- Not all engine room diamond plate decking was removed for inspection.
- Genset # 2 per vessel owner has been rebuilt within the past few years.
- The emergency steering system was not tested as the vessel custodian was not familiar with the systems operation.
- The bow thruster motor hydraulic PTO was not tested as the vessel custodian was not familiar with the system.
- The main dive compressor in the garage was turned on briefly but a tank was not filled.

(949) 675-2881 office

Surveys &  
Appraisals of  
Yachts & Small Craft



**MARITIME  
CONSULTANT  
INC.**

(714) 530-7122 fax

- The MSD was not tested as the control screen has failed. Reportedly the system can be operated by manually turning on.
- Not all ships alarm functions could be tested nor confirmed wired.



(949) 675-2881 office

Surveys &  
Appraisals of  
Yachts & Small Craft



**MARITIME  
CONSULTANT  
INC.**

(714) 530-7122 fax



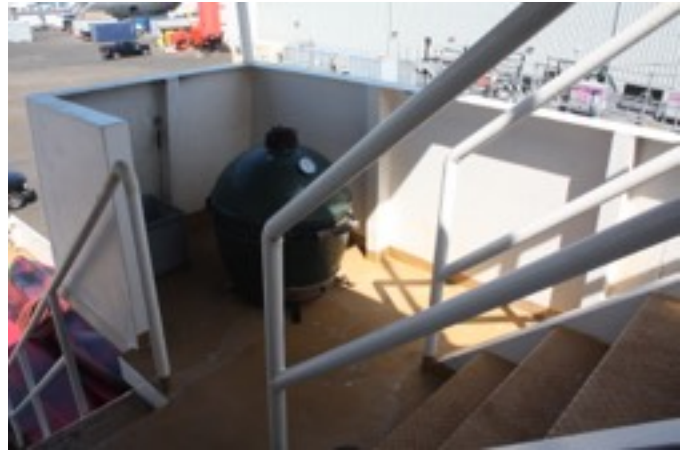
(949) 675-2881 office

Surveys &  
Appraisals of  
Yachts & Small Craft



**MARITIME  
CONSULTANT  
INC.**

(714) 530-7122 fax



(949) 675-2881 office

Surveys &  
Appraisals of  
Yachts & Small Craft



**MARITIME  
CONSULTANT  
INC.**

(714) 530-7122 fax





(949) 675-2881 office

Surveys &  
Appraisals of  
Yachts & Small Craft



**MARITIME  
CONSULTANT  
INC.**

(714) 530-7122 fax



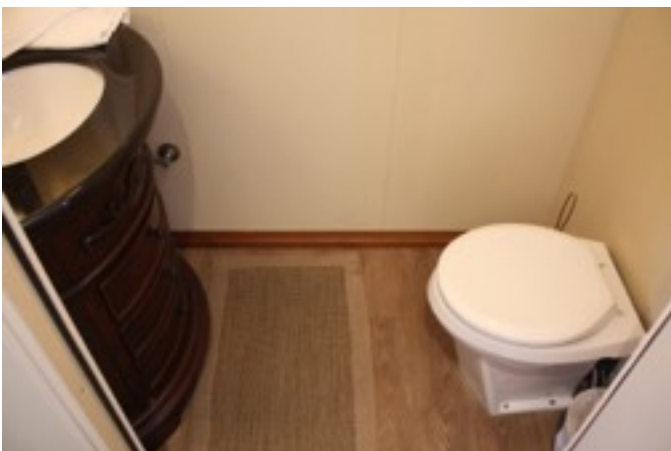
(949) 675-2881 office

Surveys &  
Appraisals of  
Yachts & Small Craft



**MARITIME  
CONSULTANT  
INC.**

(714) 530-7122 fax



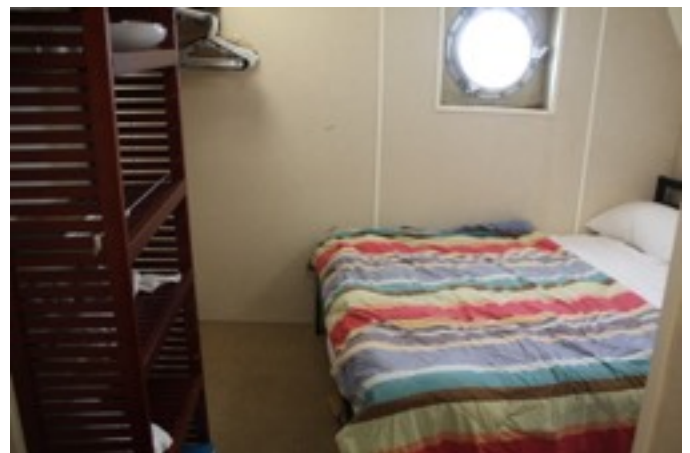
(949) 675-2881 office

Surveys &  
Appraisals of  
Yachts & Small Craft



**MARITIME  
CONSULTANT  
INC.**

(714) 530-7122 fax



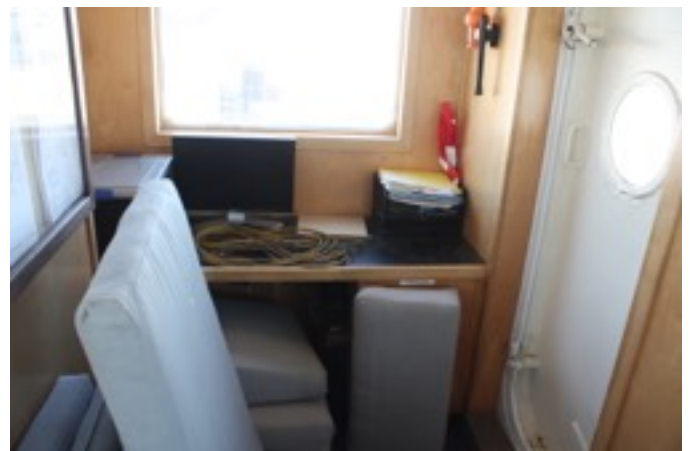
(949) 675-2881 office

Surveys &  
Appraisals of  
Yachts & Small Craft



**MARITIME  
CONSULTANT  
INC.**

(714) 530-7122 fax



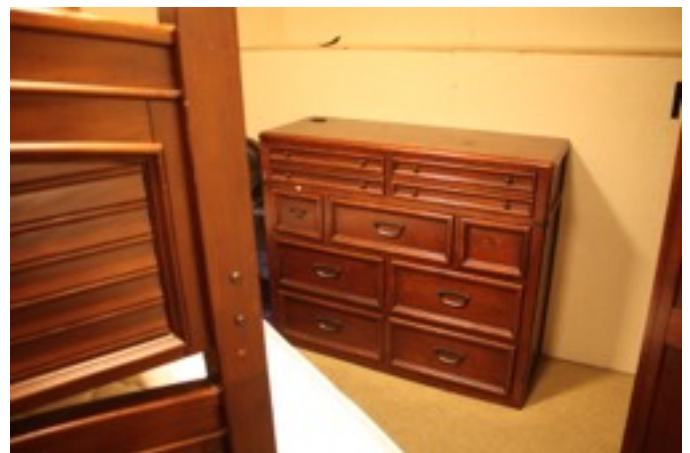
(949) 675-2881 office

Surveys &  
Appraisals of  
Yachts & Small Craft



**MARITIME  
CONSULTANT  
INC.**

(714) 530-7122 fax



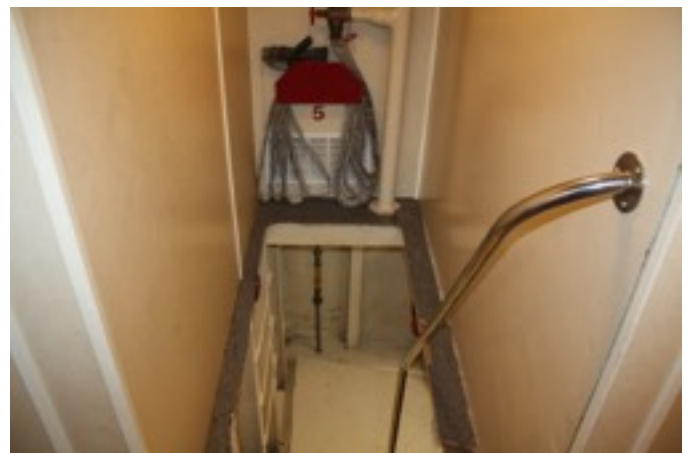
(949) 675-2881 office

Surveys &  
Appraisals of  
Yachts & Small Craft



**MARITIME  
CONSULTANT  
INC.**

(714) 530-7122 fax



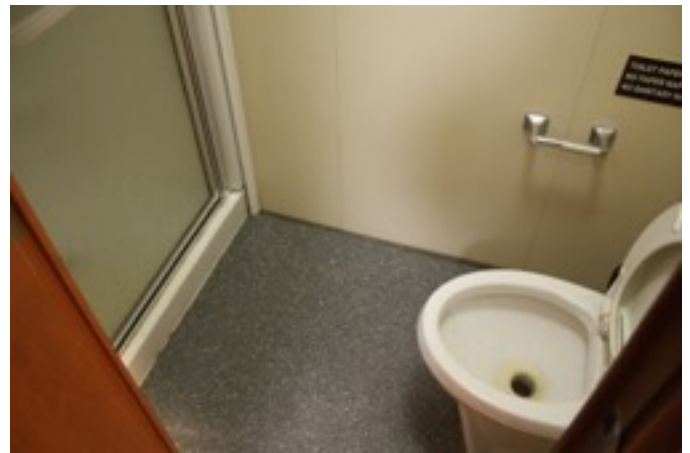
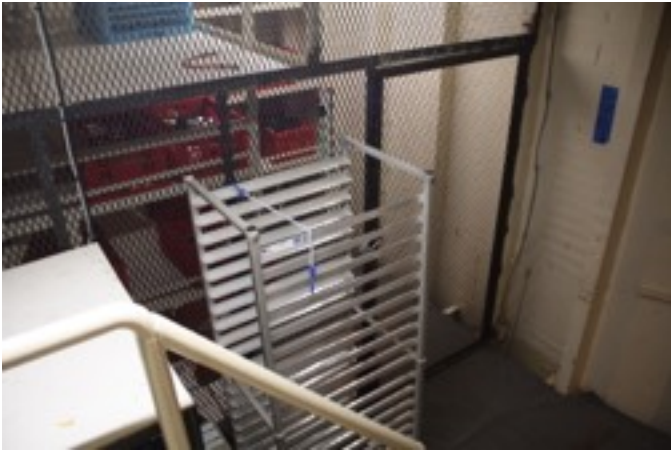
(949) 675-2881 office

Surveys &  
Appraisals of  
Yachts & Small Craft



**MARITIME  
CONSULTANT  
INC.**

(714) 530-7122 fax



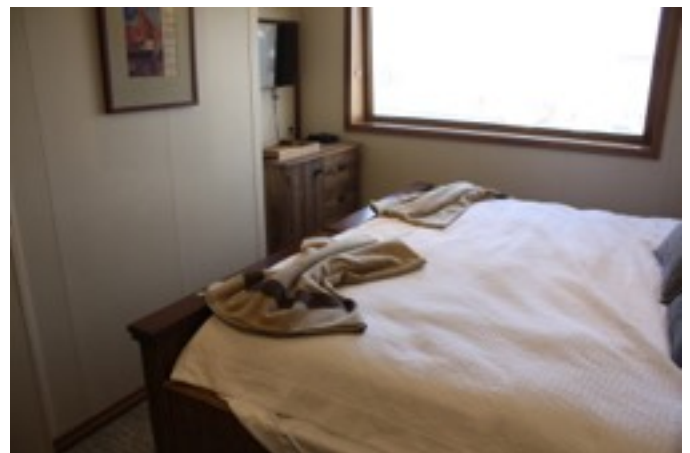
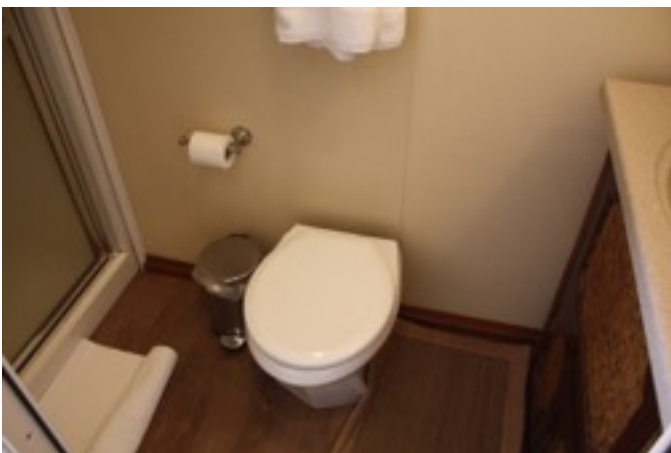
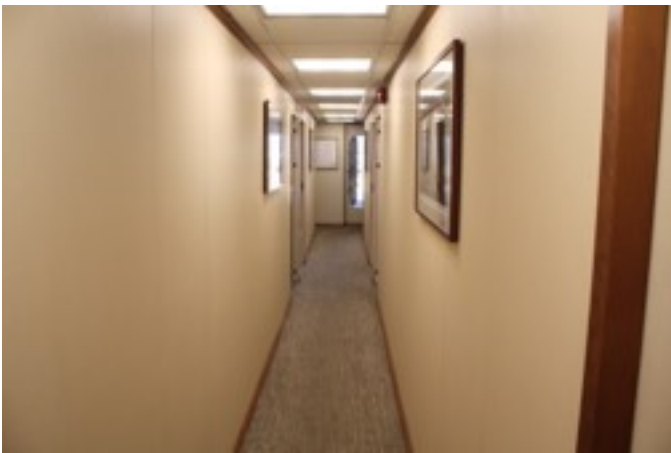
(949) 675-2881 office

Surveys &  
Appraisals of  
Yachts & Small Craft



**MARITIME  
CONSULTANT  
INC.**

(714) 530-7122 fax





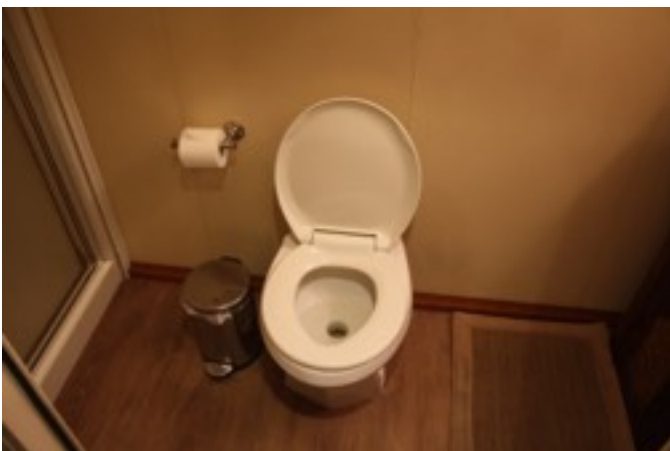
(949) 675-2881 office

Surveys &  
Appraisals of  
Yachts & Small Craft



**MARITIME  
CONSULTANT  
INC.**

(714) 530-7122 fax



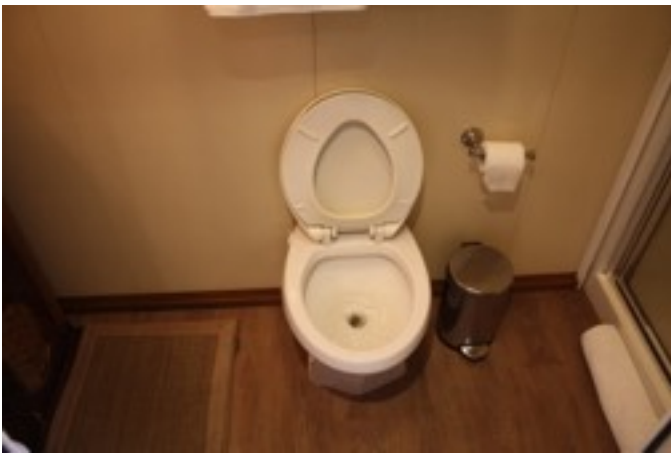
(949) 675-2881 office

Surveys &  
Appraisals of  
Yachts & Small Craft



**MARITIME  
CONSULTANT  
INC.**

(714) 530-7122 fax



(949) 675-2881 office

Surveys &  
Appraisals of  
Yachts & Small Craft



**MARITIME  
CONSULTANT  
INC.**

(714) 530-7122 fax



(949) 675-2881 office

Surveys &  
Appraisals of  
Yachts & Small Craft



**MARITIME  
CONSULTANT  
INC.**

(714) 530-7122 fax



(949) 675-2881 office

Surveys &  
Appraisals of  
Yachts & Small Craft



**MARITIME  
CONSULTANT  
INC.**

(714) 530-7122 fax



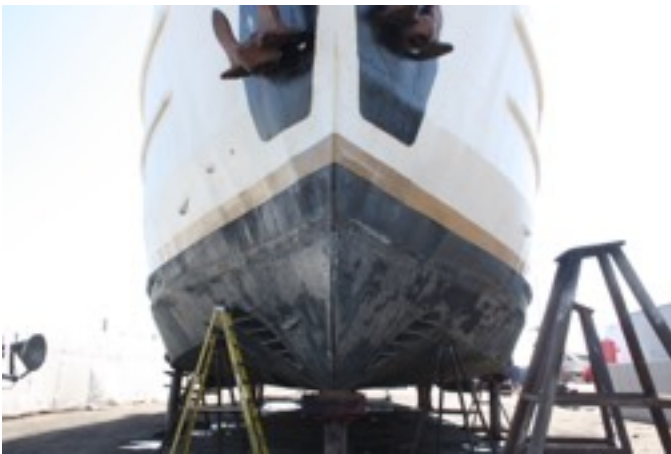
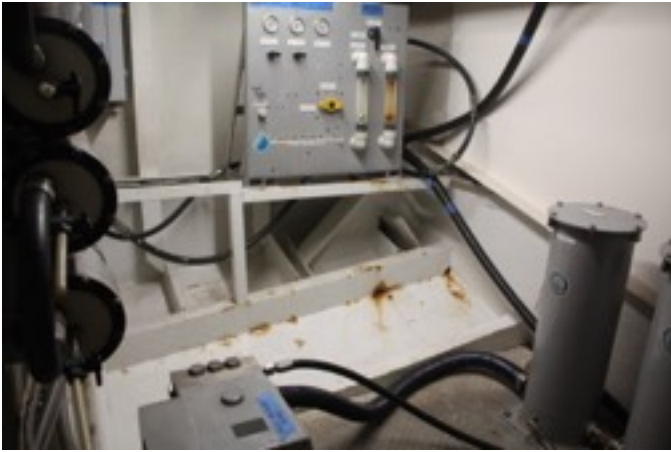
(949) 675-2881 office

Surveys &  
Appraisals of  
Yachts & Small Craft



**MARITIME  
CONSULTANT  
INC.**

(714) 530-7122 fax



(949) 675-2881 office

Surveys &  
Appraisals of  
Yachts & Small Craft



**MARITIME  
CONSULTANT  
INC.**

(714) 530-7122 fax



(949) 675-2881 office

Surveys &  
Appraisals of  
Yachts & Small Craft



**MARITIME  
CONSULTANT  
INC.**

(714) 530-7122 fax





(949) 675-2881 office

Surveys &  
Appraisals of  
Yachts & Small Craft



**MARITIME  
CONSULTANT  
INC.**

(714) 530-7122 fax





**Terms and Conditions**

It is the intent and spirit of this survey to provide a true and unbiased report of the above captioned vessel and its equipment. Elaborating on the defects and the equipment needing to be added, replaced or repaired.

Latent defects and damages not to be found without removing or opening up ceiling, joiner work, deck covers, fittings, tanks, etc., and or going aloft, disassembling machinery, plumbing concealed wiring or other parts of the vessel or its components are not intended to be covered by this survey. The undersigned shall suffer no liability for not being able to properly evaluate parts, machinery and equipment of the hull as stated above. This survey is based on the mandatory standards of the United States Coast Guard (USCG), under the authority of the United States Code of Federal regulations Title 33 and 46 and voluntary standards

and recommended practices developed by the American Boat and Yacht Council and the National Fire Protection Association along with my opinion have been used as guidelines in the conduct of this survey.

Facts discovered and presented are in no way to be deemed a guarantee and or warranty either specified or implied. It is understood that the undersigned marine surveyor and or office will not under any circumstances

be responsible for errors in judgement, inaccuracy, negligence, omission, misstatement, unforeseen or undetected defects or damages that may exist. Acceptance of this report shall constitute agreement to the foregoing. Fees for services rendered and expenses incurred are due and payable upon receipt of this report.

This report by no means is transferable.

If we may be of further service, please advise.

Respectfully Submitted,

F. Lee Frain Jr.  
NAMS - CMS

