



PRETTI ROSE

54' (16.46m) :: DOWNEAST CUSTOM :: 2021 :: GUESTS :: 3 CABINS :: CREW :: ASKING PRICE \$1,950,000 USD

OVERVIEW

Model	Downeast 54	Builder	DOWNEAST CUSTOM
Year Built	2021	Exterior Design	Newport Yacht Builders
LOA	54' (16.46m)	Hull	Fiberglass
Beam	17' 4" (5.28m)	Engines	1x, MAN, V12-1550CR, 1550 HP
Draft	6' (1.83m) Min / 6' (1.83m) Max	Max Speed	20 Knots
GRT	0.00	Cruise Speed	16 Knots
Fuel	1050 Gal	Range	672
Water	500 Gal	Location:	Rhode Island United States
Flag	USA		



CONTACT YOUR PREFERRED BROKER FOR MORE INFORMATION ON PRETTI ROSE

INTRODUCTION

The coolest lobster yacht in the world has now returned to the sales market.

This amazing collaboration of hi tech, tradition and discerning family values resulted in this most prestigious, head turning, ultimate cruiser and day boat platform known to man. Once referred to as the "Workboat that Works". PRETTI ROSE is the Downeast cruiser with a fun filled Narragansett Bay flair. Her Herreshoff style interior is perfectly crafted and joined to her Mussel Ridge 54 hull, deck and super structure thanks to the team of shipwrights lead by Jim Thompson at Newport Yacht Builders. Attention to detail on all aspects was carefully monitored by her build owner, (a prominent industry professional) and Ezra Smith, lead designer at NYB.

Expect nothing but huge smiles, enjoyment and appreciation while family and guests celebrate the heritage of this well proven collaborative effort. There will be nothing more fun, robust and safe available in this class of yachting.

WALKTHROUGH

In true lobster yacht fashion the first thing noticed upon visual inspection is the striking lines of this solid work platform. Thoughtful tradition and mass combined in perfect harmony. Her massive single level cockpit is easily entered by inward opening side doors in both port and starboard comings just aft of the house and the entire opening transom with movable stern seating positioned forward. Lounge about, easily store the toys when under way and feel safe in any seaway in the massive cockpit space. Wide-decked, tall cockpit coamings make for great casual seating while also creating a very safe area for young ones and pets. To port there is a small davit for tender hauling. Forward to port and down is access to the third cabin and second head.

With aft pilothouse enclosure open the cockpit properly compliments the attention to details and livability of the entire deck and pilothouse amenities package. Under the pilothouse extended roof one finds a full galley to port with Miele cooktop, oven, two generous refrigerator drawers, one freezer drawer and a deep stainless steel double sink. The house is completed with large, raised L shaped dining table from centerline to starboard, a very generous, well-appointed helm station with Navionics smartly available and placed, controls and steering to starboard and redundancy of most at the co-helm seat to port. Appointments of the pilothouse are truly stunning for a vessel of this nature. The house is enclosed two hundred and seventy degrees by isinglass panels, easy access door to starboard. While fully air conditioned, this space also has numerous opening hatches on the roof, as well as her windshield and side ports to provide simple natural ventilation.

Her interior space is down from the house a few steps and finished identical to the pilothouse. Forward is a queen centerline island berth. To port and starboard are shelves flanked by full length hanging lockers. Aft to starboard is an extremely well-appointed head with undermounted sink, an abundance of storage space in lockers and drawers and a large ensuite shower aft. The shower door has an additional concealed doorway for easy access to machinery space under the cockpit. A brilliant layout with comfortable access and smart sleeping quarters is completed by a guest cabin to port with L shaped single berth arrangement to accommodate two adults or children when not used simply for lounging.

With proper accommodations for six in total one should not rule out the kids slumber party with optional creative accommodations available in abundance.

DECK HARDWARE

All deck hardware is bronze.

- (2) Bow bitt and stern bitts, (custom made by TMG)
- (6) Deck cleats, Hereshoff 15"
- (2) Transom hawse pipes
- Extruded PVC Rub Rail White 2-5/8" (3 pieces at 50'L), PVC Spray Rail White 2" (6 pieces at 25'L)
- (2) Cabin top cowl vents
- (2) Cabin side cowl vents
- (4) Cabin top hatches, Lewmar Size 30 low profile
- (3) Cabin forward face round port lights
- (2) Cabin port side pocket cabin portlights
- (6) Cabin trunk portlights
- (4) Hull topside windows, port side only
- (4) Pilot house top hatches, Lewmar Size 30 low profile
- Cockpit sole track for transom door and engine cover, Harken 1" CB R27 1602
- Side entrance doors port and starboard, custom made by JTMC
- (8) Port and forward Diamond Sea Glaze windshield windows 106TH Off-White T9130 Finish, top hinged opening
- (4) Imtra W10/12 heavy duty Pantograph windshield wipers, 600MM
- (4) Bronze grab rails on cabin and house top, custom made by TMG
- Starboard enclosure, aft Enclosure and door into pilot house – polycarbonate 80 Gauge
- Atlas carbon Baby Davit 1500 manual dinghy hoist with (3) socket locations

MECHANICAL SYSTEMS

The main engine is a single 1,550 hp MAN common rail diesel engine connected to a remote V-drive transmission with a prop shaft on centerline. Primary engine controls are located at the helm. Secondary engine controls are in the starboard cockpit.

Propulsion

- MAN V12-1550CR, 1550 hp at 2300 rpm, painted white
- Sea water after cooled with SW injected elbow and jacket water pump
- 24v DC start
- 120 amp alternator for starting bank, 150 amp alternator for house bank

- Block heaters, 230v AC, 2 x 1100W
- (4) Resilient engine mounts
- Twin Disk MGX-5146RV marine transmission,
- Heat exchanger
- Vulkan ISS-VL3211S remote coupling
- MSI shaft 687.65x225 drive shaft
- Engine driven emergency bilge pump with electric clutch
- Twin Disk EC300 top mount controls at helm
- Twin Disk EJS Express joystick system
- Dynamic positioning

Sea Water Cooling

- Main engine single 3" intake thru hull with sea strainer
- Groco 3" thru hull #TH-3000-W, 3" seacock #BV-3000

Exhaust

- DeAngelo 12" wet exhaust system along starboard side
- 12" Marlin in-line muffler
- Dry riser off engine with 3" sea water inlet
- (2) GRP 12" watertight bulkhead penetration
- (2) Support stanchions for cross over pipe
- 12" GRP silicone fire retardant exhaust hose
- 12" Exhaust outlet at transom counter

Shafting and Propeller

- 38" x 38" diameter, 5 blade Nibral custom Veem propeller
- 3 1/2" diameter Aquamet 22 shaft, 21'-3" long
- (2) Johnson Duramax cutlass bearings, brass 3.5" ID x 4.5" OD, DOCK Bearing
- PSS Pro dripless shaft seal, #03-312-512 for 3.5" shaft, 5.5" shaft log
- Centek FRP shaft log, 4.22" ID x 5.5" OD, 16'-6" long, (X2 at 10' FT Each)
- Shaft Shark

Steering

The steering system is a power assisted hydraulic system with twin rams. The power steering pump is engine driven. The autopilot is electrically activated hydraulic pump. The steering wheel is on the starboard side of the helm area, the autopilot jog lever and control is located to port at the navigation station.

- Jastram helm pump H58

- 1.5L Header tank, HFU360 follow-up unit
- Standard Mussel Ridge 48' stainless steel rudder

Stabilizers

There is a Seakeeper gyro stabilizer onboard. The gyro runs off 110v AC power and is air cooled. It is located in the mechanical space aft of the shower. Wiring and inverter are included so that the gyro can be run off battery power.

- Zipwake Series E Kit Box 1000 39.37" (1000mm) #ZW2012013
- Seakeeper 9 Gyro 43.5"Wx41.5"Dx36.25"H, #90221

ELECTRICAL SYSTEMS

The primary electrical system is a 24v DC system powered by the house battery bank with a C-Zone digital switching control and monitoring system. The house bank is charged by the main engine, battery charger and house top solar panels. All lighting and systems are 24v DC. There is a generator that provides 120/240v AC power when not connected to shore power.

DC System

- House bank, (8) 8D AGM batteries, 200 Ah each, 1000 Ah total at 24v
- Main engine start bank, (2) 8D AGM batteries, 200 Ah each, 1700 CCA at 24v
- Generator start bank, (2) G31 AGM batteries, 105 Ah each, 1100 CCA at 24v
- (3) On/Both/Off battery switches for battery banks, Blue Sea #3003
- Dedicated C-Zone displays for monitoring and control at main helm
- Mastervolt DC Master 24/12-24, 24 to 12v DC converter to power 12 v electronics
- House top solar panels, Layout SR: 6xSR248, 4xSR217, 4xSR144, SR62, 2xSR93,
- Total Power: 3.180 Wp, qty (17) with charge controller

AC System

- 120/240v AC single phase power
- 125/250v, 50a Shore power
- Northern Lights 12 kW generator
- Mastervolt Chargemaster battery charger 24/100-3, 100a, 3 bank, #44021000
- 150 Amp alternator for service batteries (not connected)
- MasterView touch screen charger status panel, #77010305
- (2) Mastervolt AC Master inverters 24/2000, 2 kW

Generator

There is a Northern Lights M843NW3G, 12 kW generator located in the mechanical room aft of the shower. The generator is sea water cooled with a water drop muffler. The primary control panel is located at the main AC panel.

- 12 kW at 1800 rpm, 60 Hz single phase
- Sound enclosure
- 24v DC start, 24v DC alternator
- Sea water heat exchanger, 2" wet exhaust
- Groco 1" thru hull #TH-1000-W, 1" seacock #BV-1000
- Groco 1" sea strainer, ARG-1000
- Racor fuel filter, 500 MA, 60 gph
- Basic generator control panel located at generator
- Deluxe remote start/stop panel located at main AC panel
- Centek GenSep water drop muffler, #1029005, 2" in/out, 1.5" drain
- Centek Vernatone MKII round inline muffler, #1400003, round, 2" in/out

Shore Power

- 125/250v, 50a Shore power cord, 50ft, 3 pole, 4 wire
- (2) Marincos shore power inlet, #6373ELB

Lighting

- All lighting to be LED, 24v DC
- Navigation lights
- Remote spotlight with controls at starboard helm
- Interior dome lights with switch
- Reading lights at each bunk
- (6) Engine room utility lights
- Red lights at navigation table
- Courtesy lights in interior walkways
- (2) Aft cockpit flood lights
- (2) Underwater lights at transom, Lumishore TIX803 Supra blue and white 10-30VDC, #LM600342 internal drive

Outlets

- USB outlet at each bunk, nav and helm area
- 120v AC outlets in both heads, galley, mechanical and engine room

Bonding

- External hull zincs with bonding wire to electrical ground system
- Lightning protection on mast with bonding wire

Electronics

Navigation

- Magnetic compass at helm, backlit
- Simrad radar, 24" radome
- Simrad GPS/chartplotter
- Simrad autopilot
- Simrad AIS
- Simrad depth

Communication

- Simrad VHF
- Simrad Portable VHF
- Horn air powered, dual trumpet
- Fusion Stereo with speakers in the bridge and cockpit

REFRIGERATION

The refrigerators and freezers are Vitrifrigo under the counter, drawer units. There is a freezer unit under the port side navigator seat, a fridge unit under the galley counter and a day fridge unit in the cockpit.

- Vitrifrigo DW70 drawer refrigerator, 24v DC
- Vitrifrigo DW100 sea drawer refrigerator, 24v DC
- Vitrifrigo DRW180A refrigerator/freezer, 24v DC
- Remote sea water cooled compressors
- Galley units include a remote electronic thermostat and control

APPLIANCES

- MIELE H6200BM 60CM Speed oven
- MIELE KM63651 induction flush stove

FRESH WATER SYSTEM

The freshwater system consist of two integral FRP tanks, 1 pressure pump, 1 high pressure wash down pump, 1 accumulator tank, 1 20 gallon water heater and a house top rain collection system. The freshwater system supplies water to the shower, transom shower, (3) sinks and (2) freshwater flush heads.

- Integral FRP freshwater tanks, 240-gallon port/260-gallon starboard
- Pressure pump, 4.5 gpm at 30 psi
- Hi pressure wash down pump, 2.9 gpm at 40 psi
- Jabsco Pump Guard strainer before each pump
- Water heater, Raritan #1720-1203, 20 gal, 4500W heater, 220v AC
- Deck fills, 1 1/2" deck plate labelled WATER
- 12" inspection/clean out port in the top of each tank
- Piping 1/2" color coded PEX poly tubing, blue-cold, red-hot
- Galley sink, Elkay Crosstown stainless steel 32-1/2" x 20-1/2" x 9" offset double bowl undermount sink with water deck #ECTRUD31199R
- (2)Wash basin, Kohler Caxton oval 15x12 in heads
- Owner's shower, Kohler 8" rain-head with Katalyst, 2.5GPM
- Day head shower, Whale twist deck Shower #DS0006
- Transom shower, Kohler 8" rain-head with Katalyst, 2.5GPM
- All outlets to have shut off valves in each line for service
- Drains included at low points of lines for winterization

FUEL SYSTEM

The fuel system piping allows any of the two fuel tanks to supply fuel to the main engine and generator and return to any tank. Each tank has a dedicated fill on the side deck and vent on the topsides. The fuel filters and lines are sized for a max flow of 160 gph for the main engine.

- (2) Welded 1/4" 5052-H32 aluminum diesel 525-gallon tanks
- 2" fill with cam lock fitting, 1" supply, 3/4" vent, 3/4" return
- Stainless steel shut off for supply and selector valves for supply and return
- Supply and return manifold with main engine and generator connections
- Racor duplex fuel filter 75/1000 MAX, 180/360 gph max flow

WASTE WATER SYSTEM

The head system consists of a holding tank, two electric heads, a deck pump out deck plate and a macerator overboard discharge pump. Each head is plumbed to a Y valve that leads to either the holding tank or directly overboard. The holding tank is either pumped out via a deck plate or pumped

overboard with a macerator pump.

- Tecma Silence Plus High, 24v DC electric head fresh and salt flush (Owners)
- Tecma Silence Plus Short, 24v DC electric head fresh and salt flush (Day Head)
- Fresh water inlet and salt water supply for heads
- Discharge from head directly to dedicated holding tank or overboard thru a Y-valve
- Waste tank, 150 gal, integral FRP tank on CL
- Deck plate for holding tank pump out, 1 1/2" labeled WASTE
- Odor filter for holding tank vent
- Overboard discharge via macerator pump with locking Y-valve
- Jabsco #18590-2094 macerator pump, 24v DC, 1 1/2" outlet
- Forespar 1 1/2" thru hull
- All piping to be 1 1/2" Sch 40 PVC
- All hose Sea Land Odor Safe 1 1/2" flexible hose
- Holding tank includes Domestic waste tank level sensor, TWIII

GREY WATER SYSTEM

The sinks drain directly overboard to a thru hull located in the boot stripe. The forward shower and washer/dryer drain directly to a 90 gal integral FRP grey water tank and pumped overboard with a dedicated pump. The aft wet head shower in the day head will drain into a dedicated sump and pump.

- Integral FRP grey water tank, 90 gallon on centerline
- Grey tank pump, Whale Gulper 220, BP1554, 24v DC, 3.7 gpm
- Rule model 98B-24, sump and pump, 2-gallon capacity, 11 gpm pump capacity

OIL CHANGE SYSTEM

A dedicated oil change pump is plumbed to the main engine, transmission, and generator for dirty oil extraction. The pump has a flexible discharge line that empties into portable container.

- Reverso GP703, 3 valve, 24v DC, 3 gpm, heavy duty

VENTILATION SYSTEMS

Engine room has port and starboard louvers located inboard under side decks aft of side entrance doors. Louvers are sized to provide adequate engine air without the need of supply fans. A single extraction fan is mounted in the aft engine room bulkhead.

- Extraction fan 11" Delta-T radial fan, 1400 cfm max flow

- Automatic ventilation duct closure connected to engine room fire suppression system

There are forward cowl vents port and starboard mounted on the cabin top on Dorade boxes for interior accommodations ventilation. There are cowls mounted to the cabin trunk side to provide ventilation to the gyro/mechanical space to starboard and the pocket cabin to port.

- (4) 4" Cast bronze cowl vent
- (2) JTMC Dorade boxes

Air conditioning is provided for each of the three cabins and the helm area with self contained compressors and air handlers. The compressors is cooled by a common sea water pump.

- Domestic Marine split system air conditioning, 230v AC, single phase, 410A refrigerant
- (4) Vector Turbo compressor and air handlers
- Vector Turbo VTD8 for pocket cabin
- (2) Vector Turbo VTD12 for owner's and pocket cabin
- Vector Turbo VTD16 for bridge deck area

ANCHORING SYSTEM

There are port and starboard anchors with hawse pipes located in the topsides. Two anchor windlasses are mounted on the foredeck with chain pipes leading into the chain locker directly below the anchor windlasses.

- (2) THR Marine HHP-POOL anchors, 32 kg (70 lbs.), stainless steel
- (2) Muir Atlantic VRC3500 polished bronze windlass, 24v DC, 1500W, capstan with
- 3/8" HT chain gypsy
- Primary rode high tensile grade 43 (G43) 3/8" chain, 250ft long, marked every 25ft
- Secondary rode high tensile grade 43 (G43) 3/8" chain, 250ft long, marked every 25ft
- (2) Bronze chain stopper for 10MM Chain, #1265-010

SAFETY

Bilge pumps

There are three (3) submersible bilge pumps with dedicated float switches. Each bilge pump has a dedicated discharge located on the starboard side in the boot top. In addition to these, there is an engine mounted bilge pump with electric clutch with a dedicated suction and discharge.

- (3) Rule model 12, 24vDC, 2000 gph, 1 1/8" dia., discharge line
- (3) Rule float switch, model 35
- Jabsco #50080-2101, 24vDC, 2A belt groove, 18 gpm, bronze, 1" in/out
- Emergency engine driven bilge pump with electric clutch

Fire Extinguishing

There is a Fireboy automatic fire extinguishing system located in the engine room to protect both the main engine and the generator.

- Engine room, 500 ft³ space, 502-1115 Seafire Novec 1230 pre-engineered fire suppression system NFD 600 M manual/automatic
- Pull cable assembly 12'
- Engine shutdown control 6 circuit 9-32 VDC
- System monitor and engine shutdown control
- B402 Amerex 5lb
- (3) ABC Fire Extinguisher (3A:40BC)
- 2.5# ABC extinguisher Amerex B417T (1A"10BC
- (3) Smoke alarms, battery operated
- (3) CO2 alarms, battery operated

Disclaimer

Details of this vessel are offered in good faith but we cannot guarantee or warrant the accuracy of this information nor warrant the condition of the vessel. Buyer should instruct his agents, and/or his surveyors, to investigate such details as the buyer desires validated. This vessel is offered subject to prior sale, price change, or withdrawal without notice.



CONTACT YOUR PREFERRED BROKER FOR MORE INFORMATION ON PRETTI ROSE



CONTACT YOUR PREFERRED BROKER FOR MORE INFORMATION ON PRETTI ROSE



CONTACT YOUR PREFERRED BROKER FOR MORE INFORMATION ON PRETTI ROSE



CONTACT YOUR PREFERRED BROKER FOR MORE INFORMATION ON PRETTI ROSE







CONTACT YOUR PREFERRED BROKER FOR MORE INFORMATION ON PRETTI ROSE





CONTACT YOUR PREFERRED BROKER FOR MORE INFORMATION ON PRETTI ROSE









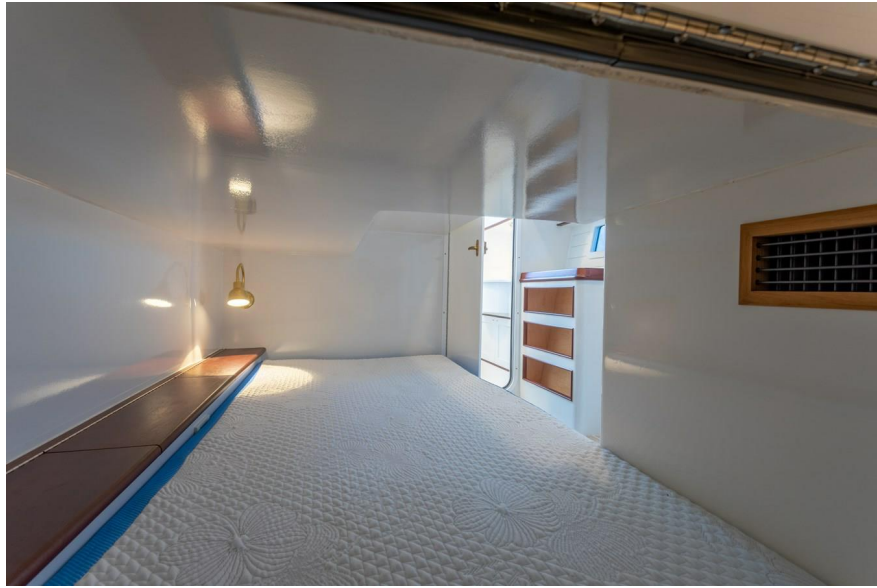


CONTACT YOUR PREFERRED BROKER FOR MORE INFORMATION ON PRETTI ROSE











CONTACT YOUR PREFERRED BROKER FOR MORE INFORMATION ON PRETTI ROSE

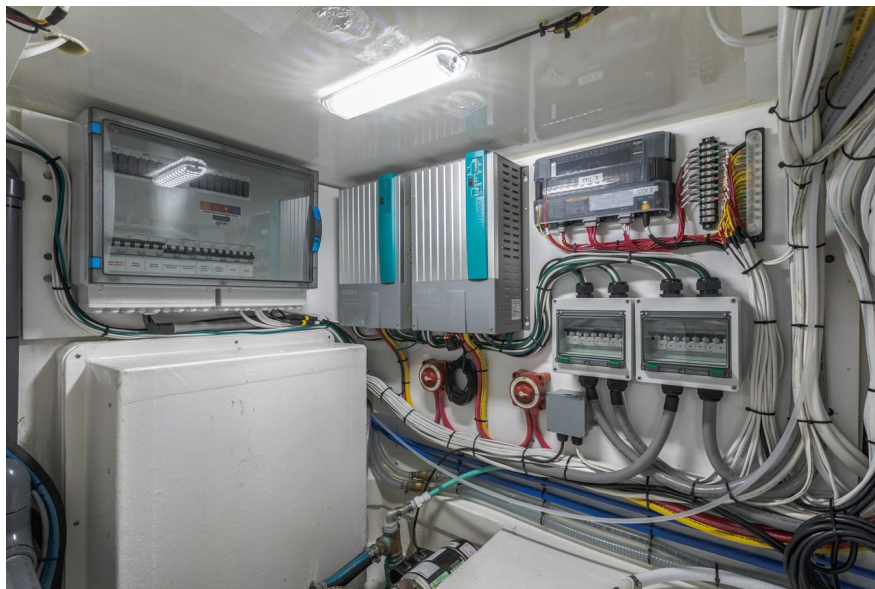




CONTACT YOUR PREFERRED BROKER FOR MORE INFORMATION ON PRETTI ROSE

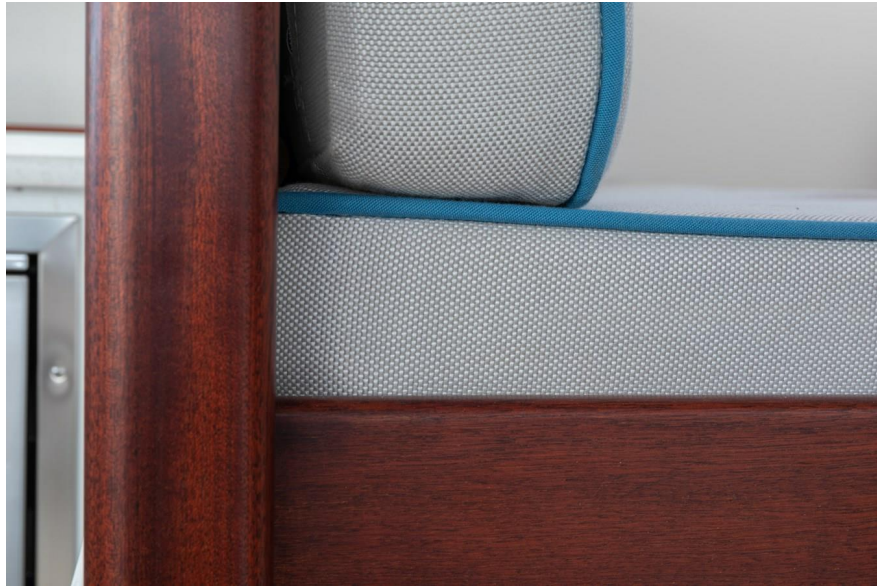






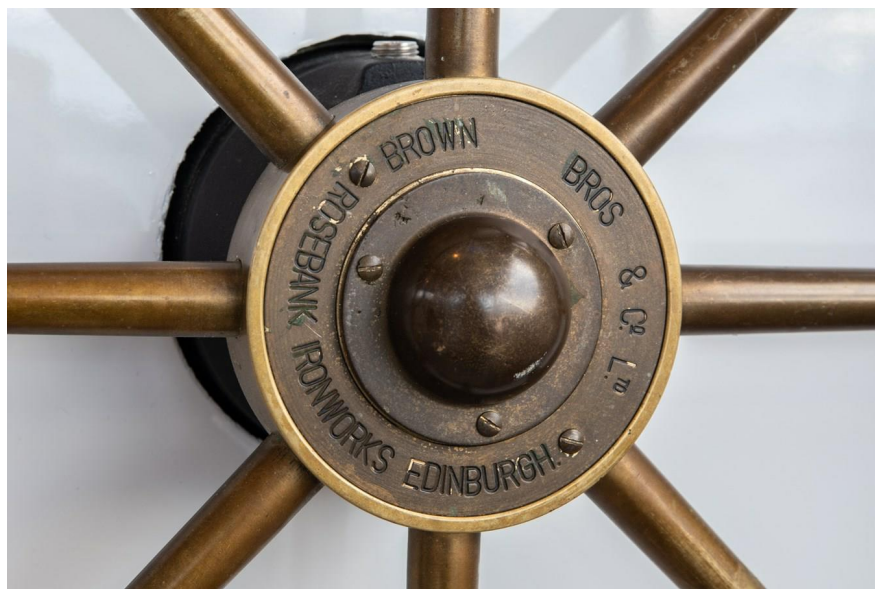






CONTACT YOUR PREFERRED BROKER FOR MORE INFORMATION ON PRETTI ROSE







CONTACT YOUR PREFERRED BROKER FOR MORE INFORMATION ON PRETTI ROSE



CONTACT YOUR PREFERRED BROKER FOR MORE INFORMATION ON PRETTI ROSE



CONTACT YOUR PREFERRED BROKER FOR MORE INFORMATION ON PRETTI ROSE



CONTACT YOUR PREFERRED BROKER FOR MORE INFORMATION ON PRETTI ROSE



CONTACT YOUR PREFERRED BROKER FOR MORE INFORMATION ON PRETTI ROSE



CONTACT YOUR PREFERRED BROKER FOR MORE INFORMATION ON PRETTI ROSE



CONTACT YOUR PREFERRED BROKER FOR MORE INFORMATION ON PRETTI ROSE



CONTACT YOUR PREFERRED BROKER FOR MORE INFORMATION ON PRETTI ROSE



CONTACT YOUR PREFERRED BROKER FOR MORE INFORMATION ON PRETTI ROSE



CONTACT YOUR PREFERRED BROKER FOR MORE INFORMATION ON PRETTI ROSE

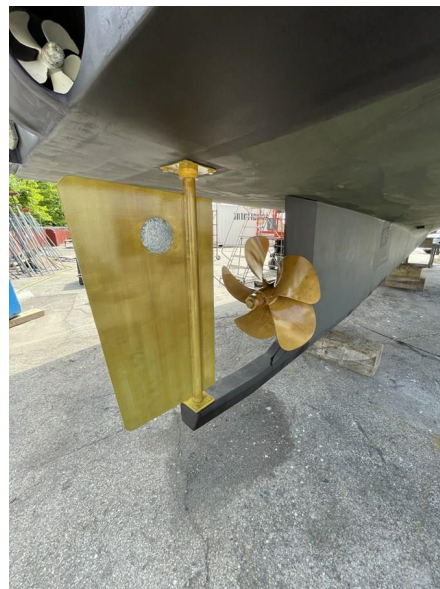


CONTACT YOUR PREFERRED BROKER FOR MORE INFORMATION ON PRETTI ROSE



CONTACT YOUR PREFERRED BROKER FOR MORE INFORMATION ON PRETTI ROSE





CONTACT YOUR PREFERRED BROKER FOR MORE INFORMATION ON PRETTI ROSE



GA

