

MINE SET

94' Mangusta M/Y 2016

BUILDER	Mangusta
L.O.A.	28.65m / 94'
BEAM	6.43m / 21' 11"
DRAFT	1.64m / 5' 4"
GRT	135 GT
YEAR	2016
ACCOM	6 guests in 3 cabins
SPEED	30.0 knots max 20.0 knots cruising
PRICE	USD 3,750,000

















































































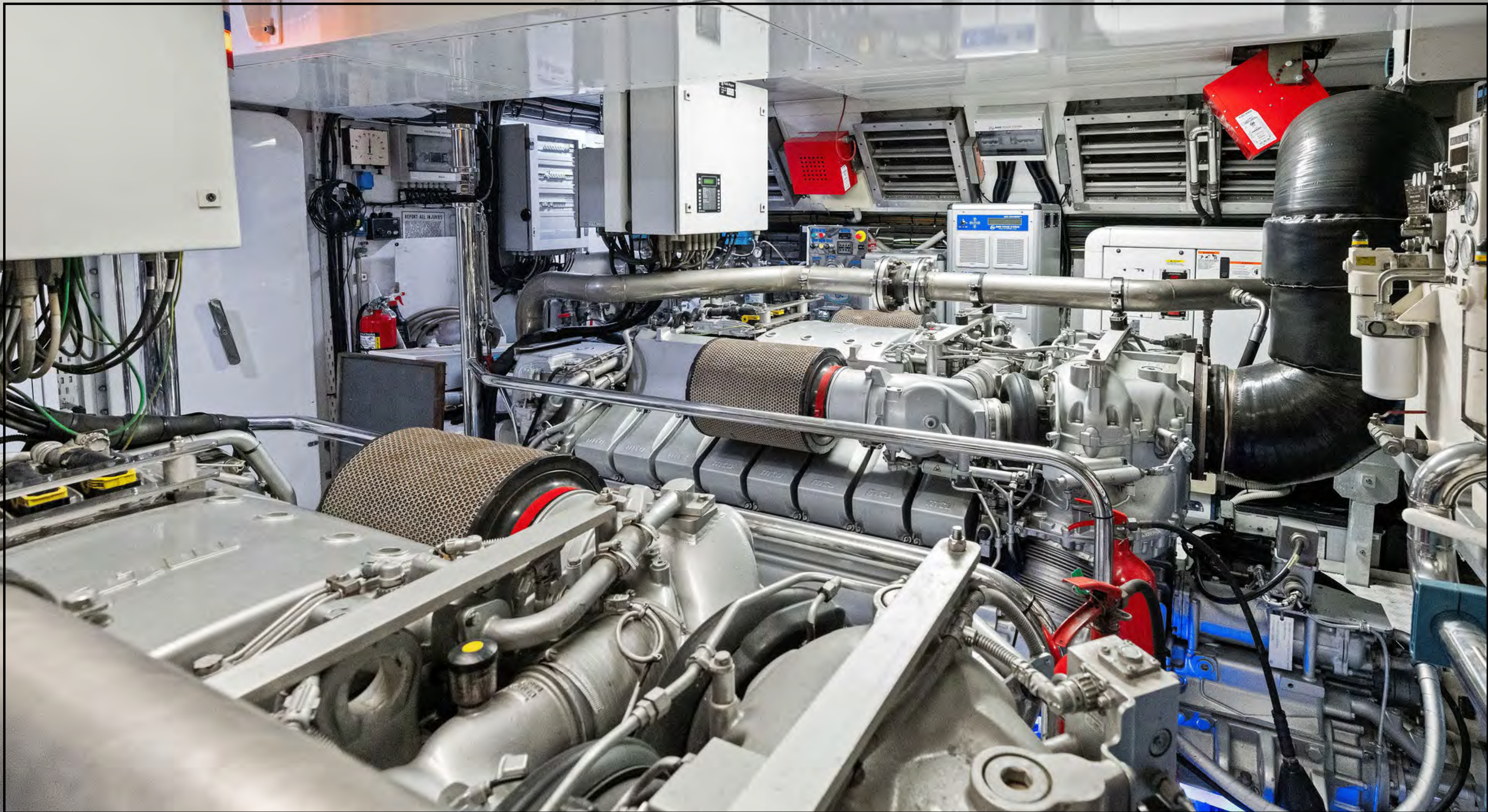






TABLE OF CONTENTS

1. MAIN CHARACTERISTICS
2. DIMENSIONS
3. SPEED
4. CAPACITIES
5. MECHANICAL EQUIPMENT
6. COMMENTS





1. Main Characteristics

TYPE	Motor Yacht
BUILDER	Overmarine Group
NAVAL ARCHITECT	Overmarine Group
EXTERIOR DESIGN	Overmarine Group
INTERIOR DESIGN	Overmarine Group
YEAR	2016
CONSTRUCTION	Fiberglass superstructure with teak decks
FLAG	USA
ENGINES	2 x MTU 16V2000 M96L
GRT	135 GT

2. Dimensions

L.O.A.	28.65m / 94'
BEAM	6.43m / 21' 11"
DRAFT	1.64m / 5' 4"

3. Speed

MAXIMUM SPEED	30.0 knots
CRUISING SPEED	20.0 knots



4. Capacities

ACCOMMODATION	6 Guests in 3 cabins
FUEL	9,296 liters / 2,456 US gallons
FRESH WATER	1,396 liters / 369 US gallons

5. Mechanical & Electrical Equipment

ENGINES	2 x MTU 16V2000 M96L, 2600 HP
GYRO STABILIZER	2 x Seakeeper
BOW THRUSTER	Electric
WATERMAKERS	Idromar Reverse Osmosis
GENERATORS	2 x 28 kW Kohler
AIR CONDITIONING	Upgraded Frigit Air Conditioning system (135,680 BTU's)



6. Comments

MINE SET is the finest example of a 94' Mangusta on the market today.

Built with Mangusta performance and style, MINE SET is spacious and has flexible interior accommodations. A custom interior staircase leaves the aft deck free for entertaining and maneuvering. Italian furnishings decorate the main salon and a sliding sunroof, paired with the expansive aft deck lounge area, creates a wide open indoor / outdoor environment.

The master stateroom, VIP suite and twin cabin accommodate 6 guests, and all staterooms offer ensuite heads. The extended swim platform and bow seating with double sunpads make swimming accessible and sunbathing comfortable. MINE SET is powered by twin MTU 16V-2000 M92L engines and reaches a top speed of 30 knots.